

## ARTICLE INFO

Received : January 10, 2023

Revised : November 21, 2023

Accepted : November 24, 2023

CT&F - Ciencia, Tecnología y Futuro Vol 13, Num 2 December 2023, pages 5 - 13

DOI: <https://doi.org/10.29047/01225383.661>



# A COMPARATIVE STUDY OF A TRANS-CRITICAL CARBON DIOXIDE CYCLE POWERED BY A SINGLE FLASH GEOTHERMAL CYCLE WITH/WITHOUT ECONOMIZER OPERATING MODES

## ■ ESTUDIO COMPARATIVO DE UN CICLO TRANSCRÍTICO DE DIÓXIDO DE CARBONO ALIMENTADO POR UN ÚNICO CICLO GEOTÉRMICO FLASH EN LOS MODOS DE FUNCIONAMIENTO CON/SIN ECONOMIZADOR

Yashar Aryanfar<sup>1\*</sup>; Jorge-Luis, García-Alcaraz<sup>2\*</sup>; Julio Blanco-Fernández<sup>3</sup>; Ingrid-Iovana Burgos-Espinoza<sup>1</sup>; Luis-Javier Márquez-Figueroa<sup>1</sup>

### ABSTRACT

Renewable energy, particularly geothermal energy, is on the rise globally. It has been demonstrated that recovering heat lost during geothermal cycles is essential due to the inefficiency of these cycles. This paper proposes a combined power generation cycle using EES software to model a single-flash geothermal cycle, and a trans-critical carbon dioxide cycle. The study compares the system's performance during its "Without Economizer" and "With Economizer" operational stages. The impact of the economizer on the system's output metrics, including the net power output, energy efficiency, and exergy efficiency, was examined. The results show that the "With Economizer" system's net power output increased from 451.3 kW to 454 kW. The energy efficiency difference between the two systems is based on the first law of thermodynamics, where the value of the "Without Economizer" system is 6.036%, and the "With Economizer" system is 6.075%. The system without an economizer had an exergy efficiency value of 26.26%, whereas the system with an economizer reached 26.43%, based on the second law of thermodynamics. Installing the economizer increased the total economic cost rate of the system from 0.225M\$/Year to 0.2294M\$/Year, which increased the product cost rate from 15.82\$/GJ to 16.02\$/GJ.

### RESUMEN

El uso de energías renovables, en particular la geotérmica, está aumentando en todo el mundo. Se ha demostrado que recuperar el calor perdido durante los ciclos geotérmicos es esencial debido a la ineficiencia de estos ciclos. Este estudio propone un ciclo combinado de generación de energía que utiliza el software EES para modelar un ciclo geotérmico de un solo flujo y un ciclo transcritical de dióxido de carbono. El estudio compara el rendimiento del sistema durante sus fases operativas "Sin economizador" y "Con economizador". Se examina el impacto del economizador en las métricas de producción del sistema, incluida la producción de potencia neta, la eficiencia energética y la eficiencia exergética. Los resultados muestran que la potencia neta del sistema "con economizador" aumentó de 451.3 kW a 454 kW. La diferencia de eficiencia energética entre los dos sistemas se basa en la primera ley de la termodinámica, teniendo el sistema "Sin economizador" un valor de 6.036% y el sistema "Con economizador" un valor de 6.075%. El sistema sin economizador tuvo un valor de eficiencia exergética del 26.26%, mientras que el sistema con economizador alcanzó un valor del 26.43% basado en la segunda ley de la termodinámica. La instalación del economizador aumentó la tasa de coste total económico del sistema de 0.225 M\$/año a 0.2294 M\$/año, lo que se tradujo en un aumento de la tasa de coste del producto de 15.82\$/GJ a 16.02\$/GJ.

### KEYWORDS / PALABRAS CLAVE

### AFFILIATION

Economizer | Production cost rate | single-flash geothermal cycle | total cost rate | trans-critical CO<sub>2</sub> cycle.

Economizador | tasa de coste de producción | ciclo geotérmico monofásico | tasa de coste total | ciclo transcritical de CO<sub>2</sub>.

<sup>1</sup> Department of Electric Engineering and Computation, Autonomous University of Ciudad Juárez, Chihuahua, México.

<sup>2</sup> Department of Industrial and Manufacturing Engineering, Autonomous University of Ciudad Juárez, Chihuahua, México.

<sup>3</sup> Department of Mechanical Engineering, University of La Rioja, Edificio Departamental, C/San José de Calasanz, Logroño, La Rioja, Spain

\*email: al216622@alumnos.uacj.mx and jorge.garcia@uacj.mx

## 1. INTRODUCTION

The global population is increasing annually, and energy needs are growing daily. Fossil fuels are the most important sources of human energy worldwide. However, fossil fuel sources are not renewable and imply significant environmental risks (Zobaa & Bansal, 2011). In recent years, the ecological effects of fossil fuels have become increasingly evident. Global warming has led to the melting of polar ice caps, endangering the lives of all organisms. Natural fires and storms are sources of significant hazard.

Therefore, alternative clean energy sources for fossil fuels have received considerable attention recently. Solar, wind, water, fuel cell, geothermal, and biomass energy are renewable sources (Kurchania, 2012). Choosing a clean energy production method depends on various factors, including geographical and biological conditions and operating costs. In addition, energy conversion processes must be free of environmental hazards, and their adverse effects, such as extreme heat production and environmental pollutants, must be avoided. (Nordin, 2010). Likewise, energy conversion processes must be free of environmental hazards, and their adverse effects, such as extreme heat production and environmental pollutants, must be avoided. Among the clean energy production methods, wind and water have the lowest cost, whereas the highest cost is solar power. Geothermal energy is one of the best solutions for producing renewable energy, given its various benefits. Unlike other renewable energy sources constrained by certain seasons, timing, and environmental factors, geothermal energy can be used continuously. Further, the cost of electricity in geothermal power plants is competitive with that of other standard (fossil) power plants and even cheaper than other new energy types. Therefore, geothermal resources are valuable because of their availability, simple technology for creating power plants, possibility of uninterrupted operation, and long-term use (Karki, 2009).

The ability of  $N_2O$ ,  $CO_2$ , and  $H_2O$  EGS to extract heat has been compared by Liu et al. (2022). A two-dimensional thermo-hydraulic-mechanical (THM) coupled EGS model with discrete fractures was created. The effects of the injection-production parameters on the heat-extraction outcomes of the EGS employing various working fluids were also examined. The results demonstrate that, under the same conditions,  $N_2O$ -EGS and  $CO_2$ -EGS performed almost exactly during heat extraction. Sahana et al. (2021) suggested employing a supercritical  $CO_2$  power cycle to recover heat from the HWCS when hot water is delivered from an oilfield at a temperature close to  $140^\circ C$ . The output of the supercritical  $CO_2$  power cycle drives the compressor of the ejector-expansion  $CO_2$  refrigeration cycle. Using some  $CO_2$  cycles to reject heat, the humidification-dehumidification (HDHn) unit may produce fresh water. In a study, Wang et al. (2019) used supercritical  $CO_2$  (s $CO_2$ ) to simulate geothermal heat mining. The requirements for choosing the working fluid for organic Rankine cycles (ORCs) that use s $CO_2$  from a geothermal reservoir are then given for subcritical, superheated, and supercritical ORCs. In this study, a practical fluid classification method for ORC was proposed. Models were used by Jiang et al. (2017) to predict efficiencies of standalone and hybrid systems. It was found that the hybrid system has an efficiency that is on par with or even higher than the combined efficiency of the two individual  $CO_2$ -EGS and  $CO_2$ -solar thermal systems compared to standalone  $CO_2$ -EGS and  $CO_2$ -solar thermal systems.

According to Liu et al. (2020) research, the compression techniques used in supercritical  $CO_2$  (S- $CO_2$ ) and transcritical  $CO_2$  (T- $CO_2$ ) power

cycles differ, and their implications for the equipment's and power cycles' thermodynamic performance are explored. According to the data, there was a significant increase in the thermal efficiency and net output power close to the critical temperature, while the overall compressor/pump inlet temperature decreased. A recompression supercritical carbon dioxide Brayton cycle, coupled with a solar power tower, was proposed and studied by Cao et al. (2022). Two energy-storage stages were used to increase the stability of the solar subsystem for continuous daily operation. In addition, a solid oxide electrolyzer was included in the plan. Liu et al. (2021) used conventional and advanced exergy evaluations to assess the exergetic performance within the transcritical  $CO_2$  ejector refrigeration system integrated with a thermoelectric sub-cooler (EJE + TES). The findings show that 89.44% of the total energy destruction is endogenous, meaning that there is no close relationship between the system's constituent parts.

This study compared two operating modes of a single flash geothermal cycle—"Without Economizer" and "With Economizer"—powered by a trans-critical carbon dioxide cycle. Both systems were modeled in the EES software after being designed based on thermodynamic equations and thermodynamics' first and second laws. Adding an economizer to the system and studying its effects on output parameters (such as energy efficiency, energy efficiency, and net power output) and the system's performance are the primary novelties of this study. Furthermore, a sensitivity analysis was performed to examine the impact of modifications to the system's critical parameters on both operating modes' energy efficiency, energy efficiency, and net power output. The main aims of this study were:

- Simulating a single flash geothermal power plant in both "Without Economizer" and "With Economizer" operating modes using a transcritical  $CO_2$  Cycle.
- An analysis comparing the two operating modes, "With Economizer" and "Without Economizer."
- Variations in net power output, energy efficiency, and exergy efficiency concerning system critical parameters.
- A sensitivity analysis of the economic parameters and an economic analysis of the "with economizer" and "without economizer" systems.

Typically, thermodynamic equations and primary data are used to model suggested systems in an EES software environment, and the output results are compared. The output parameters (energy efficiency, exergy efficiency, net power output, total cost rate, and production cost rate) of the systems are shown and discussed in the form of comparative diagrams for both working modes with the changes in separator pressure,  $CO_2$  turbine inlet pressure, and  $CO_2$  condenser temperature.

## 2 PROPOSED SYSTEM DESCRIPTION

Suppose that geothermal power plants are compared to other new energy power plants. Geothermal power plants are essential worldwide because of their high availability factor (85% of the time per year), and these power plants can be used as the base load of the network (Gürbüz et al., 2022). Beneath the Earth's surface is

a layer of hot and molten rock called magma, which continuously produces heat from radioactive substances such as uranium and potassium. This heat can have 50,000 times more energy than oil and gas sources. Areas where the earth's temperature is high due to volcanoes, or the earth's crust is thin, are considered for this industry. The edge of the Pacific Ocean and the ring of volcanoes were introduced as the best options. The vibration of earthquakes, magma, hot rocks, and Earth's crust allows water to move upward and create hot water springs (Başoğul et al., 2021).

The concept of EGS (Enhanced Geothermal Systems) originated from the old idea of HDR (Hot and Dry Rocks) at the Los Alamos National Laboratory in the United States. Hot and dry rocks in some places deep on Earth are called dry sources because of the lack of hot water or steam (Mahmoudan et al., 2022). It is evident that the use of dry resources is possible, and the significant development of technology in the last few decades has enabled human access to the problematic part of energy hidden in Earth, called improved geothermal energy. Enhanced geothermal systems (EGS) contain vast reserves of renewable energy. The main goal of related studies is to create flow paths between underground rocks to facilitate heat transfer, or increase permeability for circulating large volumes of water (or other working fluids), and injecting water into hot rocks deep in the ground to exploit this potential (Yargholi et al., 2020). This is the heat of the hot stones. Water can be injected to the desired depth so that, after heating, it is directed to the Earth's surface in the form of steam or hot water (Hoseinzadeh et al., 2020).

The single-flash geothermal cycle driven by the trans-critical carbon dioxide cycle is shown in Figures 1(a) and 1(b) in "Without Economizer" and "With Economizer" working modes. The Engineering Equation Solver (EES) software simulates the system. In the simulation approach, each system component was used to control-volume engineering, and the first and second laws of thermodynamics were applied.

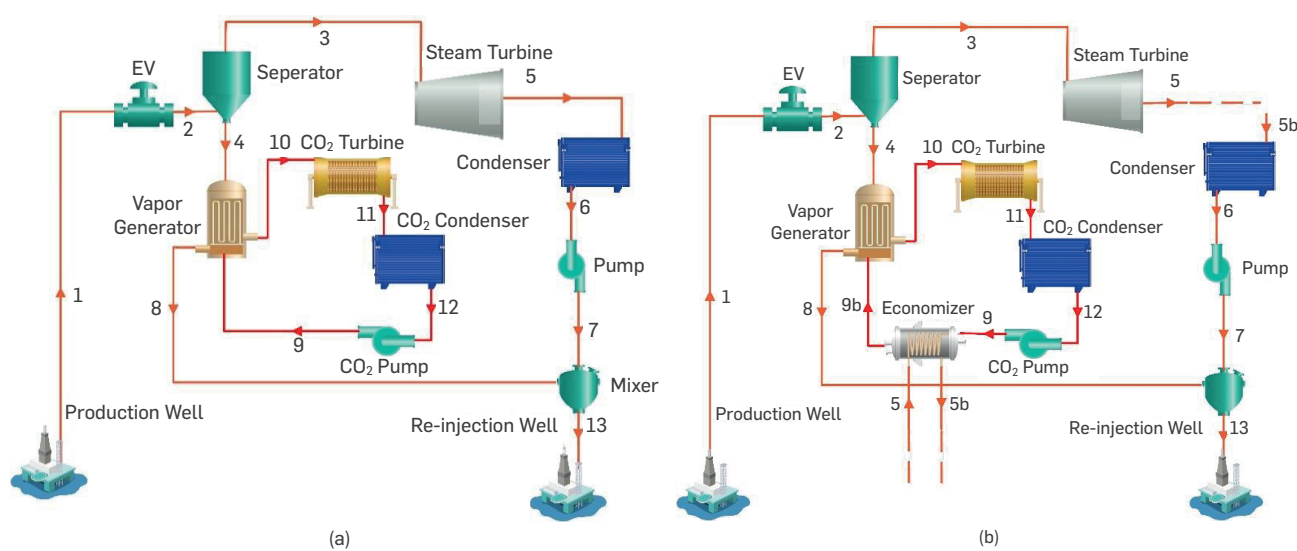
During the decompression process, in which the pressure is reduced while maintaining a constant enthalpy, the geo-fluid that enters the system is transformed into a two-phase fluid, as illustrated in Figure 1(a). The steam turbine was powered by the saturated vapor

component of the two-phase fluid that moved into the separator. The vapor generator (VG), which increases the temperature of the carbon dioxide gas before the heat exchanger outlet fluid is routed to the ground, receives the saturated liquid component of the separator. It is delivered to the gas turbine at an appropriate pressure and temperature, producing more power for the entire system.

Figure 1(b) shows the installation of an economizer between the CO<sub>2</sub> pump and VG to enhance system efficiency. The output stream of the steam turbine (point 5) enters the economizer and warms the CO<sub>2</sub> pump's output stream before it reaches the condenser (point 9). Determining the congestion point in a trans-critical cycle is difficult because the slope of the temperature changes when carbon dioxide gas heats up within heat exchangers, such as an evaporator. The temperature difference between the beginning and end was considered constant for ease of solution.

There are two significant differences between EES software and other software that use numerical solution methods:

- 1) The EES software can automatically identify equations that are to be solved together, and this feature allows the EES software to solve the equations in the shortest possible time.
- 2) EES software has many thermodynamic and internal mathematical functions, which are helpful in engineering calculations in thermodynamics, fluid mechanics, and heat transfer. For example, property tables for different materials are available in EES software, and it is possible to obtain the desired property having two independent properties for materials. Moreover, property tables for different materials are available in EES software, and it is thus possible to obtain the desired property by having two independent properties for materials. Furthermore, the EES software can read programs written in Pascal, C, and Fortran programming languages. One of the most salient features of EES software is its parametric study ability, provided by its parametric table. By entering the values of the independent variables in this table, the corresponding values of the dependent variables were calculated, and the relationships between the different parameters in this table can be shown as graphs.



**Figure 1.** Schematic of the proposed single flash geothermal cycle powered by a trans-critical CO<sub>2</sub> (a) Without Economizer (b) With Economizer.

### 3. GOVERNING EQUATIONS

The first law of thermodynamics is typically viewed as a different interpretation of energy conservation law. The energy was neither generated nor destroyed. Instead, according to the principle of conservation, it transforms from one form to another. The first rule of nature is the second law of thermodynamics, so this law is absolutely one of the most valuable discoveries made by man. This law is difficult to understand for most researchers and engineers. This is because it involves numerous complex concepts such as enthalpy, entropy, and Gibbs free energy. The first definition of the second law of thermodynamics is Clausius's law. According to this definition, it is impossible to build a cycle engine or a cycle whose sole effect is to continuously transfer heat from a source with a higher temperature to a head with a lower temperature. In simple terms, building a refrigerator that can receive energy from a lower-temperature source (cold source) and transfer it to a higher-temperature source (hot source) is only possible by doing work. The second definition of the second law of thermodynamics is the Kelvin-Planck definition. According to this definition, building a cycle heat engine that can operate equal to the heat absorbed from the source is not possible. The efficiency of such an engine is 100%, a dream that human kind has had for years, which is an unattainable goal. In other words, the heat engine cannot convert all the energy obtained from the heat source in one cycle into work, but part of the energy received from the hot start is given to the cold source as wasted energy.

According to equations (1) and (2), and ignoring the kinetic and potential energies, the system is written while considering the control volume, mass, and energy balances for each component of the system (2) (Melzi et al., 2021; Pambudi et al., 2021; Parikhani et al., 2021; Saengsikhihao et al., 2021; Yazarlou & Saghafi, 2021):

$$\sum \dot{m}_i = \sum \dot{m}_o \quad (1)$$

$$\sum \dot{Q} + \sum \dot{m}_i h_i = \sum \dot{m}_o h_o + \dot{W} \quad (2)$$

where  $\dot{m}_i$  is the input flow rate and  $\dot{m}_o$  is the output flow rate. Also,  $h_i$  is the enthalpy of the input flow, and  $h_o$  is the enthalpy of the output flow.  $\dot{W}$  is the work and  $\dot{Q}$  is the exchanged heat. Equations (3) and (4) yield each turbine's isentropic efficiency and net power production, respectively.

$$\eta_{Tur} = \frac{h_i - h_o}{h_i - h_{o,s}} \quad (3)$$

$$\dot{W}_{Tur} = \dot{m}_i (h_i - h_o) \quad (4)$$

The isentropic efficiency and net power of each pump are expressed as

$$\eta_{Pump} = \frac{h_i - h_{o,s}}{h_i - h_o} \quad (5)$$

$$\dot{W}_{Pump} = \dot{m}_i (h_o - h_i) \quad (6)$$

Equations (7), (8), and (9) represent the net power of the system, as well as the energy efficiency and exergy efficiency of the entire system (Chen et al., 2021; Mohtaram et al., 2021; Wang et al., 2015):

$$\dot{W}_{net} = \dot{W}_{tur,steam} + \dot{W}_{tur,CO2} - \dot{W}_{pump,steam} - \dot{W}_{pump,CO2} \quad (7)$$

$$\eta_{en} = \dot{W}_{net} / \dot{Q}_{in} \quad (8)$$

$$\eta_{ex} = \dot{W}_{net} / E_{in} \quad (9)$$

In the current investigation, the following hypotheses were considered (Aali et al., 2017; El Haj Assad et al., 2021; Sun et al., 2020):

1. All cycle parts function in steady-state situations (as control volume).
2. The changes in the kinetic energy and potential in all components are insignificant, and the pressure drop and heat loss in the pipelines can be disregarded.
3. The isotropic efficiency of the pumps is 0.75, whereas that of the turbines is 0.8.
4. The ambient temperature and pressure used for analysis were 25 °C and 0.1 MPa, respectively.

The increase in energy demand in the 21st century comes along with problems such as environmental pollution, lack of natural resources, limited space, and suitable places to construct fossil fuel power plants. However, the growth of technology worldwide has increased the demand for energy, especially electrical energy. From this perspective, it is essential to determine alternative clean energies, irreversibility factors in energy-consuming systems, and optimal energy consumption using thermoeconomic analysis. In thermo-economic analysis, thermodynamics is combined with economic concepts to improve the design of systems. The most efficient system can be identified by considering economic issues while minimizing the price and operating time of the system. The cost-rate balance for the entire system can be stated as follows in the economic analysis (Mosaffa et al., 2017):

$$\dot{C}_{total} = \dot{C}_{fuel} + \sum_k (\dot{Z}_{CI} + \dot{Z}_{OM})_k \quad (10)$$

Where  $\dot{C}_{total} (=c_{product} \dot{W}_{net})$  and  $\dot{C}_{fuel} (=c_G \dot{E}_{X_1})$  represent the respective total (or product) and fuel-cost rates. The following are estimates of the total running, maintenance, and capital expenditure cost rates for each system component (Bejan et al., 1995):

$$\dot{Z}_{CI,k} + \dot{Z}_{OM,k} = \frac{Z_k \times \emptyset}{N \times 3600} CRF \quad (11)$$

$Z_k$  is the investment cost of each component,  $\emptyset$  maintenance coefficient,  $N$  is the number of annual operating hours, and  $CRF$  is the return on investment coefficient.  $CRF$  can be calculated according to the following expression (Bejan et al., 1995):

$$CRF = \frac{i(i+1)^n}{(i+1)^n - 1} \quad (12)$$

Therefore, " $i$ " is the interest rate and " $n$ " is the useful life of the system. The investment cost functions of each system component are listed in Table 1.

Calculating certain factors in economic research, such as the total cost, return on investment, and cost of producing an energy unit, might help clarify the situation.

**Table 1.** The investment cost function of different system components

Component	Capital Cost Function
Condenser	$1773 \times \dot{m}$ (Baghernejad & Yaghoubi, 2011)
Economizer	$2143 \times (A_{Economizer})^{0.514}$ (Xu et al, 2014)
Pump	$1120 \times (\dot{W}_{pump})^{0.8}$ (Mosaffa et al, 2017)
VG	$2143 \times (A_{VG})^{0.514}$ (Xu et al, 2014)
Steam Turbine	$6000 \times \dot{W}_T^{0.7}$ (Baghernejad & Yaghoubi, 2011)
GasTurbine	$\left(\frac{1536\dot{m}_{CO_2}}{0.92-\eta_T}\right) \times \ln\left(\frac{P_i}{P_o}\right) \times [1 + \exp(0.0367i - 54.4)]$ Baghernejad & Yaghoubi, 2011)

$$\dot{C}_{tot} = c_{product} \dot{W}_{net} \quad (13)$$

That  $\dot{C}_{tot}$  shows the total cost rate of the system and  $c_{product}$  is product cost. Table 2 presents the essential data required for the system simulation in the software environment. One of the main components of any application is the data that is used. Familiarity with data types in programming helps to use them correctly. This will improve the performance and speed of programming.

**Table 2.** Initial data for modeling (Mosaffa et al., 2017; Wang et al., 2015)

Definition	Values
Ambient temperature ( $T_0$ )	25°C
Ambient Pressure ( $P_0$ )	101kPa
Geothermal fluid inlet temperature ( $T_1$ )	200°C
Geo-fluid mass flow rate ( $\dot{m}_1$ )	10kg/s
Geo-fluid inlet pressure ( $P_1$ )	Saturated
Separator pressure ( $P_2$ )	500kPa
Steam turbine output pressure ( $P_5$ )	20kPa
CO <sub>2</sub> turbine inlet pressure ( $P_{10}$ )	15000kPa
CO <sub>2</sub> condenser temperature ( $T_{cond}$ )	30°C
Turbine isentropic efficiency ( $\eta_{um}$ )	0.8
Pump isentropic efficiency ( $\eta_{pump}$ )	0.75
Evapore inlet-outlet difference temperature ( $\Delta T_{TRD}$ )	20°C
Heat Exchanger Pinch Point ( $\Delta T_{pp}$ )	5°C
Annual operation hours of the system (N)	7300h
Annual interest rate (i)	14%
Lifetime of the system (n)	15years
Maintenance factor ( $\emptyset$ )	1.06
Unit cost of exergy of the geothermal source ( $c_G$ )	1.3\$/GJ

## 4. RESULTS AND DISCUSSION

In this section, the performance of the proposed systems is assessed and analyzed, and the findings of the energy, exergy, and economic analyses are presented in tables and figures. The input parameter values are listed in Table 1 to determine how the different parameters affect the system's performance. Temperature, pressure, mass flow rate, enthalpy, and entropy are the four

thermodynamic parameters for the "Without Economizer" system in Table 3 and the "With Economizer" system in Table 4.

**Table 3.** Thermodynamic properties of the different points of the system in "Without Economizer" working mode

State	Working Fluid	T(°C)	P(kPa)	h(kJ/kg)	s(kJ/kg.k)	$\dot{m}$ ( $\frac{kg}{s}$ )	x(-)	E(kW)
1	Geo-Fluid	200	1555	852.3	2.331	10	-	1718
2	Geo-Fluid	151.8	500	852.3	2.36	10	0.1007	1633
3	Geo-Fluid	151.8	500	2748	6.821	1.007	1	756.2
4	Geo-Fluid	151.8	500	640.1	1.86	8.993	0	876.3
5	Geo-Fluid	60.06	20	2347	7.122	1.007	-	263.9
6	Geo-Fluid	60.06	20	251.4	0.832	1.007	0	10.31
7	Geo-Fluid	60.12	500	252.1	0.8325	1.007	-	10.82
8	Geo-Fluid	131.8	500	302.3	1.654	8.993	-	650
9	CO <sub>2</sub>	52.1	15000	-186.3	-1.383	4.682	-	1029
10	CO <sub>2</sub>	111.8	15000	-21.58	-0.9139	4.682	-	1155
11	CO <sub>2</sub>	54.4	7214	-47.81	-0.8938	4.682	-	1005
12	CO <sub>2</sub>	30	7214	-202.2	-1.395	4.682	0	970.8
13	Geo-Fluid	124.7	500	523.9	1.578	10	-	640.7

**Table 4.** Thermodynamic properties of the different points of the system in "With Economizer" working mode.

State	Working Fluid	T(°C)	P(kPa)	h(kJ/kg)	s(kJ/kg.k)	$\dot{m}$ ( $\frac{kg}{s}$ )	x(-)	E(kW)
1	Geo-Fluid	200	1555	852.3	2.331	10	-	1718
2	Geo-Fluid	151.8	500	852.3	2.36	10	0.1007	1633
3	Geo-Fluid	151.8	500	2748	6.821	1.007	1	756.2
4	Geo-Fluid	151.8	500	640.1	1.86	8.993	0	876.3
5	Geo-Fluid	60.06	20	2347	7.122	1.007	-	263.9
5b	Geo-Fluid	60.06	20	2300	6.821	1.007	0.8691	258.2
6	Geo-Fluid	60.06	20	251.4	0.832	1.007	0	10.31
7	Geo-Fluid	60.12	500	252.1	0.8325	1.007	-	10.82
8	Geo-Fluid	131.8	500	554.3	1.654	8.993	-	650
9	CO <sub>2</sub>	52.1	15000	-186.3	-1.383	4.967	-	1091
9b	CO <sub>2</sub>	55.06	15000	-176.8	-1.354	4.967	-	1096
10	CO <sub>2</sub>	111.8	15000	-21.58	-0.9139	4.967	-	1226
11	CO <sub>2</sub>	54.4	7214	-47.81	-0.8938	4.967	-	1066
12	CO <sub>2</sub>	30	7214	-202.2	-1.395	4.967	0	1030
13	Geo-Fluid	124.7	500	523.9	1.578	10	-	640.7

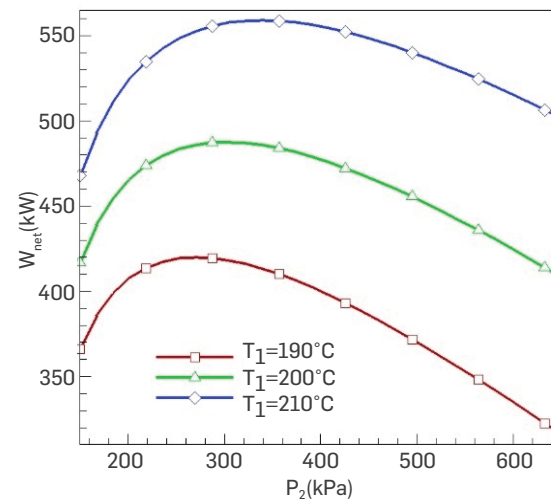
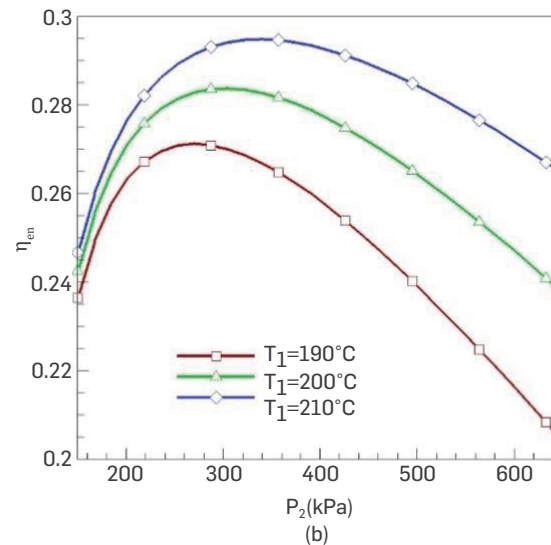
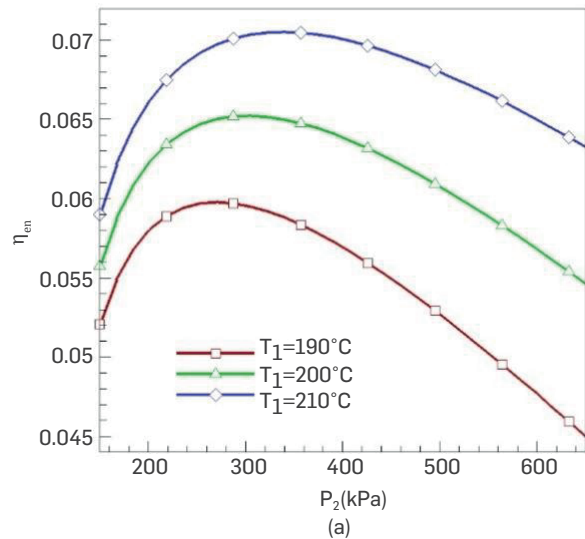
Table 5 shows the output results from the systems simulation in two "Without Economizer" and "With Economizer" working modes. One of the crucial features in Table 5 is the increase of the net power output from 451.3 kW to 454 kW, which indicates a 0.598% increase in the "With Economizer" system. Regarding energy efficiency, this value is 6.036% for the "Without Economizer" system, and reaches 6.075% in the "With Economizer" system, that is, a 0.646% improvement from the perspective of the first law of thermodynamics. Regarding exergy efficiency, the value of this efficiency for the "without economizer" system was 26.26%. The "with economizer" system reached 26.43%, representing an improvement of 0.647% from the second law of thermodynamics or exergy standpoint. From an economic perspective, the total cost rate of the primary system is 0.225 M\$/Year. With the addition of the economizer, this value reaches 0.2294 M\$/Year, representing an increase of 1.955% in this parameter. As for product cost rate, this parameter is 15.82\$/GJ for the basic system, and with the addition of the economizer, this value reaches 16.02\$/GJ, that is, an increase of 1.264%.

**Table 5.** Output results from the simulation of systems in two "Without Economizer" and "With Economizer" working modes.

Parameters	Definition	"Without Economizer" operating mode	"With Economizer" operating mode	Units
$W_{tur, steam}$	Power production of the steam turbine	403.6	403.6	kW
$W_{tur, CO_2}$	Power production of the CO <sub>2</sub> turbine	122.8	130.3	kW
$W_{pump, steam}$	Power consumption of the steam pump	0.6551	0.6551	kW
$W_{pump, CO_2}$	Power consumption of CO <sub>2</sub> pump	74.62	79.16	kW
$W_{net}$	Total net power output	451.3	454	kW
$\eta_{en}$	Energy Efficiency	6.036	6.075	%
$\eta_{ex}$	Exergy efficiency	26.26	26.43	%
$\dot{C}_{total}$	Total cost rate	0.225	0.2294	M\$/Year
$C_{product}$	Product cost rate	15.82	16.02	\$/GJ

In sum, the results suggest that adding an economizer to the proposed single-flash geothermal system powered by a trans-critical carbon dioxide cycle leads to an improvement of approximately 0.6-0.65% in the studied system's energy and exergy output parameters. Figures 2(a), (b), and (c) show the changes in energy efficiency, exergy efficiency, and total output work of the system equipped with an economizer concerning the changes in separator pressure for inlet temperatures ( $T_1$ ) of 190, 200, and 210°C.

First, it should be noted that the higher the system inlet temperature, the better the system performance. This is illustrated in Figure 2. By increasing the separator pressure from 150kPa to 650kPa, the system's energy efficiency first increased, reached a maximum point, and then decreased. From the energy efficiency perspective, this maximum point is the most suitable separator temperature for an ideal system performance. This ideal pressure equals 270.7kPa, 305.2kPa and 339.4kPa for temperatures of 190°C, 200°C and 210°C, respectively. As for the exergy efficiency, with the increase



**Figure 2.** The effect of separator pressure changes on (a) energy efficiency, (b) exergy efficiency and (c) net power output of the system equipped with an economizer at inlet temperatures of 190°C, 200°C and 210°C.

in separator pressure from 150kPa to 650kPa, the exergy energy efficiency first increased, reached a maximum point, and then decreased. Relative to exergy efficiency, this maximum point is the most suitable separator temperature for an ideal system performance. This ideal sharp pressure equals 270.7kPa, 305.2kPa and 339.4kPa for temperatures of 190°C, 200°C and 210°C, respectively. From the total output work perspective, the figures' behavior is similar to the energy and exergy efficiency.

The Limitations of the current study are:

1. **Geothermal Resource Availability:** One of the limitations of implementing a trans-critical CO<sub>2</sub> cycle powered by a single-flash geothermal cycle is the availability of suitable geothermal resources. The success of this system relies heavily on the availability and quality of geothermal reservoirs, which can support robust and efficient operations.
2. **Technological Challenges:** Various technological challenges may be associated with implementing a trans-critical CO<sub>2</sub> cycle in geothermal power plants. These challenges include designing and optimizing heat exchangers, selecting appropriate working fluids, and developing efficient control strategies for optimal performance. Overcoming these challenges requires extensive research and development efforts.
3. **System Efficiency:** While a trans-critical CO<sub>2</sub> cycle powered by a single-flash geothermal cycle has the potential to be highly efficient, there may be limitations to achieving optimal performance. Operational and design factors such as temperature and pressure limitations may affect cycle efficiency. Finding ways to enhance the system efficiency and maximize the power output would be an area of interest for future research.
4. **Economic Viability:** Another limitation is the feasibility of implementing a trans-critical CO<sub>2</sub> cycle with an economizer in a geothermal power plant. Assessing the cost-effectiveness of this system, including the capital investment required, maintenance costs, and potential revenue generation, is crucial for determining its viability and long-term sustainability.

The future research directions of this study include :

1. **Optimization of Heat Exchangers:** Future research could focus on optimizing heat exchanger designs to enhance the heat transfer efficiency between the geothermal and CO<sub>2</sub> working fluids. This could involve exploring advanced heat-transfer enhancement techniques, such as enhanced surfaces or novel heat-exchanger configurations, to maximize the heat-transfer rate and overall system performance.
2. **Development of Advanced Control Strategies:** Efficient control strategies are essential for successfully operating a trans-critical CO<sub>2</sub> cycle powered by a single-flash geothermal cycle. Future research could explore advanced control algorithms, such as model predictive control or artificial intelligence-based approaches, to optimize system operation, maximize power output, and ensure safe and stable operation under varying geothermal conditions.
3. **Environmental Impact Assessment:** Evaluating the environmental impact of implementing this technology is crucial. Future research could focus on conducting comprehensive life cycle assessments to analyze the environmental footprint of a trans-critical CO<sub>2</sub> cycle with an economizer compared to conventional geothermal power plants or other renewable energy sources. This assessment would help identify the technology's potential environmental benefits and limitations.
4. **Techno-economic Analysis:** Further research should be

conducted to evaluate the techno-economic feasibility of implementing a trans-critical CO<sub>2</sub> cycle in geothermal power plants. This includes assessing the overall cost-effectiveness, calculating the levelized cost of electricity, and conducting economic sensitivity analyses to identify the key factors influencing the system's economic viability.

5. **System Integration and Flexibility:** Investigating the integration of a trans-critical CO<sub>2</sub> cycle with other energy systems and grid integration is an important area for future research. This would involve studying the potential for hybridization with other renewable energy sources, such as solar or wind, and exploring the system's flexibility to adapt to the changing grid demands and conditions.

By addressing these limitations and focusing on future research directions, implementing a trans-critical CO<sub>2</sub> cycle powered by a single flash geothermal cycle equipped with an economizer could be further enhanced, thus improving efficiency, economic viability, and environmental sustainability.

## CONCLUSIONS

A trans-critical CO<sub>2</sub> cycle powered by a single-flash geothermal cycle with an economizer is a promising technology for efficiently harnessing geothermal energy. This system combines geothermal energy extraction using a flash cycle with carbon dioxide (CO<sub>2</sub>) as the working fluid. In a single-flash geothermal cycle, high-pressure geothermal fluid is fed into a flash tank, which rapidly decreases pressure, causing a part of the fluid to vaporize and generate steam. This steam was then used to drive the turbine and generate electricity. The remaining liquid is reinjected back into the geothermal reservoir. By integrating a trans-critical CO<sub>2</sub> cycle into this setup, the unused heat from a single flash cycle can be further utilized. An economizer, an additional heat exchanger that extracts heat from the geothermal fluid after it exits the flash tank, is part of this setup. This additional heat transfer maximizes energy extraction from the geothermal fluid before reinjection.

In the trans-critical CO<sub>2</sub> cycle, CO<sub>2</sub> acts as the working fluid, which has several advantages over traditional fluids such as steam. CO<sub>2</sub> is environment-friendly, has a lower critical temperature, has better thermodynamic properties, and allows for a more compact system design. The trans-critical CO<sub>2</sub> cycle operates above its critical point, where the CO<sub>2</sub> fluid undergoes a phase change from gas to liquid without condensation. This cycle utilizes the heat extracted from the geothermal fluid to raise the temperature and pressure of CO<sub>2</sub>, enabling energy conversion through expansion in a turbine. The economizer in this system plays a crucial role in transferring heat from the geothermal fluid to the CO<sub>2</sub> working fluid. This allows CO<sub>2</sub> to reach higher operating temperatures in the turbine, improving energy conversion efficiency.

- The research highlights a significant finding: the net power output increased from 451.3 kW to 454 kW, indicating a 0.598% increase in the "With Economizer" system. According to the first rule of thermodynamics, there is a 0.646% gain in energy efficiency between the "Without Economizer" system's 6.036% and the "With Economizer" system's 6.075%. Concerning energy efficiency, the system "without an economizer had a value of 26.26%. According to the second law of thermodynamics, or exergy, the "with economizer" system achieves 26.43%, which is an improvement of 0.647%.
- From an economic standpoint, the baseline system's total cost rate is 0.225 M\$/Year; however, the economizer installation

raises this value to 0.2294 M\$/Year, or a 1.955% increase in this parameter. When considering the product cost rate, the value of this parameter is 15.82\$/GJ for the base system, and it increases by 1.264% to 16.02\$/GJ adding the economizer.

Overall, a trans-critical CO<sub>2</sub> cycle powered by a single-flash geothermal cycle with an economizer translates into several benefits. It maximizes the utilization of geothermal energy, improves energy conversion efficiency, and reduces the environmental impact compared to conventional power generation methods. Furthermore, this technology has the potential for widespread deployment in geothermal-rich areas, thus contributing to clean and sustainable energy production.

## REFERENCES

- Aali, A., Pourmahmoud, N., & Zare, V. (2017). Exergoeconomic analysis and multi-objective optimization of a novel combined flash-binary cycle for Sabalan geothermal power plant in Iran. *Energy Conversion and Management*, 143, 377-390. <https://doi.org/10.1016/j.enconman.2017.04.025>
- Baghernejad, A., & Yaghoubi, M. (2011). Exergoeconomic analysis and optimization of an Integrated Solar Combined Cycle System (ISCCS) using genetic algorithm. *Energy Conversion and Management*, 52(5), 2193-2203. <https://doi.org/10.1016/j.enconman.2010.12.019>
- Başoğlu, Y., Güler, O. V., & Keçebaş, A. (2021). Chapter 8 - Binary geothermal power plant. In *Thermodynamic Analysis and Optimization of Geothermal Power Plants* (pp. 113-129). Elsevier. <https://doi.org/10.1016/B978-0-12-821037-6.00013-5>
- Bejan, A., Tsatsaronis, G., & Moran, M. J. (1995). *Thermal design and optimization*. John Wiley & Sons. <http://www3.ub.tu-berlin.de/ihv/000278235.pdf>
- Cao, Y., Elmasry, Y., Abed, A. M., Singh, P. K., Aouaini, F., Bouzgarrou, S. M., ... & Galal, A. M. (2022). Study and multi-objective optimization of integrating an energetic solar thermal application, a supercritical process, and a high-temperature electrolyser. *Case Studies in Thermal Engineering*, 40, 102530. <https://doi.org/10.1016/j.csite.2022.102530>
- Chen, L., Wang, Y., Xie, M., Ye, K., & Mohtaram, S. (2021). Energy and exergy analysis of two modified adiabatic compressed air energy storage (A-CAES) system for cogeneration of power and cooling on the base of volatile fluid. *Journal of Energy Storage*, 42, 103009. <https://doi.org/10.1016/j.est.2021.103009>
- El Haj Assad, M., Aryanfar, Y., Javaherian, A., Khosravi, A., Aghaei, K., Hosseinzadeh, S., ... & Mahmoudi, S. M. S. (2021). Energy, exergy, economic and exergoenvironmental analyses of transcritical CO<sub>2</sub> cycle powered by single flash geothermal power plant. *International Journal of Low-Carbon Technologies*, 16(4), 1504-1518. <https://doi.org/10.1093/ijlct/ctab076>
- Gürbüz Yağız, E., Güler, O. V., & Keçebaş, A. (2022). Environmental impact assessment of a real geothermal driven power plant with two-stage ORC using enhanced exergo-environmental analysis. *Renewable Energy*, 185, 1110-1123. <https://doi.org/10.1016/j.renene.2021.12.097>
- Hosseinzadeh, S., Yargholi, R., Kariman, H., & Heyns, P. S. (2020). Exergoeconomic analysis and optimization of reverse osmosis desalination integrated with geothermal energy [<https://doi.org/10.1002/ep.13405>]. *Environmental Progress & Sustainable Energy*, 39(5), e13405. <https://doi.org/10.1002/ep.13405>
- Jiang, P. X., Zhang, F. Z., & Xu, R. N. (2017). Thermodynamic analysis of a solar-enhanced geothermal hybrid power plant using CO<sub>2</sub> as working fluid. *Applied Thermal Engineering*, 116, 463-472. <https://doi.org/10.1016/j.applthermaleng.2016.12.086>
- Karki, A. B. (2009). Biogas as renewable energy from organic waste. *Biotechnology*, 10, 1-9. <https://www.eolss.net/Sample-Chapters/C17/E6-58-09-10.pdf>
- Kurchania, A. (2012). Biomass energy. In *Biomass Conversion: the interface of biotechnology, chemistry and materials science* (pp. 91-122). Berlin, Heidelberg: Springer Berlin Heidelberg. [https://doi.org/10.1007/978-3-642-28418-2\\_2](https://doi.org/10.1007/978-3-642-28418-2_2)
- Liu, F., Kang, Y., Hu, Y., Chen, H., Wang, X., Pan, H., & Xie, J. (2022). Comparative investigation on the heat extraction performance of an enhanced geothermal system with N<sub>2</sub>O, CO<sub>2</sub> and H<sub>2</sub>O as working fluids. *Applied Thermal Engineering*, 200, 117594. <https://doi.org/10.1016/j.applthermaleng.2021.117594>
- Liu, X., Yu, K., Wan, X., Zheng, M., & Li, X. (2021). Conventional and advanced exergy analyses of transcritical CO<sub>2</sub> ejector refrigeration system equipped with thermoelectric subcooler. *Energy Reports*, 7, 1765-1779. <https://doi.org/10.1016/j.egy.2021.03.023>
- Liu, Y., Zhao, Y., Yang, Q., Liu, G., & Li, L. (2020). Thermodynamic comparison of CO<sub>2</sub> power cycles and their compression processes. *Case Studies in Thermal Engineering*, 21, 100712. <https://doi.org/10.1016/j.csite.2020.100712>
- Mahmoudan, A., Esmailion, F., Hoseinzadeh, S., Soltani, M., Ahmadi, P., & Rosen, M. (2022). A geothermal and solar-based multigeneration system integrated with a TEG unit: Development, 3E analyses, and multi-objective optimization. *Applied Energy*, 308, 118399. <https://doi.org/10.1016/j.apenergy.2021.118399>
- Melzi, B., Keffif, N., Assad, M. E. H., Delnava, H., & Hamid, A. (2021). Modelling and Optimal Design of Hybrid Power System Photovoltaic/Solid Oxide Fuel Cell for a Mediterranean City. *Energy Engineering*, 118(6), 1767-1781. <https://doi.org/10.32604/EE.2021.017270>
- Mohtaram, S., Sun, Y., Omid, M., & Lin, J. (2021). Energy-exergy efficiencies analyses of a waste-to-power generation system combined with an ammonia-water dilution Rankine cycle. *Case Studies in Thermal Engineering*, 25, 100909. <https://doi.org/10.1016/j.csite.2021.100909>
- Mosaffa, A. H., Mokarram, N. H., & Farshi, L. G. (2017). Thermo-economic analysis of combined different ORCs geothermal power plants and LNG cold energy. *Geothermics*, 65, 113-125. <https://doi.org/10.1016/j.geothermics.2016.09.004>
- Nordin, N. (2010, June). Limitations of Commercializing Fuel Cell Technologies. In *AIP Conference Proceedings* (Vol. 1225, No. 1, pp. 498-506). American Institute of Physics. <https://doi.org/10.1063/1.3464897>
- Pambudi, N. A., Wibowo, S., Ranto, & Saw, L. H. (2021). Experimental Investigation of Organic Rankine Cycle (ORC) for Low Temperature Geothermal Fluid: Effect of Pump Rotation and R-134 Working Fluid in Scroll Expander. *Energy Engineering*, 118(5). <https://doi.org/10.32604/EE.2021.016642>
- Parikhani, T., Delpisheh, M., Haghghi, M. A., Holagh, S. G., & Athari, H. (2021). Performance enhancement and multi-objective optimization of a double-flash binary geothermal power plant. *Energy Nexus*, 2, 100012. <https://doi.org/10.1016/j.nexus.2021.100012>
- Saengsikhiao, P., Taweekun, J., Maliwan, K., Sae-ung, S., & Theppaya, T. (2021). Development of Environmentally Friendly and Energy Efficient Refrigerants for Refrigeration Systems. *Energy Engineering*, 118(2), 411-433. <https://doi.org/10.32604/EE.2021.012860>
- Sahana, C., De, S., & Mondal, S. (2021). Integration of CO<sub>2</sub> power and refrigeration cycles with a desalination unit to recover geothermal heat in an oilfield. *Applied Thermal Engineering*, 189, 116744. <https://doi.org/10.1016/j.applthermaleng.2021.116744>
- Sun, H., Dong, Q., Zhang, C., & Chen, J. (2020). An Energy Efficiency Improvement Method for Manufacturing Process Based on ECRSR. *Energy Engineering*, 117(3), 153-164. <https://doi.org/10.32604/EE.2020.010706>
- Wang, J., Wang, J., Dai, Y., & Zhao, P. (2015). Thermodynamic analysis and optimization of a flash-binary geothermal power generation system. *Geothermics*, 55, 69-77. <https://doi.org/10.1016/j.geothermics.2015.01.012>
- Wang, X., Levy, E. K., Pan, C., Romero, C. E., Banerjee, A., Rubio-Maya, C., & Pan, L. (2019). Working fluid selection for organic Rankine cycle power generation using hot produced supercritical CO<sub>2</sub> from a geothermal reservoir. *Applied Thermal Engineering*, 149, 1287-1304. <https://doi.org/10.1016/j.applthermaleng.2018.12.112>
- Xu, G., Liang, F., Yang, Y., Hu, Y., Zhang, K., & Liu, W. (2014). An Improved CO<sub>2</sub> Separation and Purification System Based on Cryogenic Separation and Distillation Theory. *Energies*, 7(5), 3484-3502. <https://doi.org/10.3390/en7053484>
- Yargholi, R., Kariman, H., Hoseinzadeh, S., Bidi, M., & Naseri, A. (2020). Modeling and advanced exergy analysis of integrated reverse osmosis desalination with geothermal energy. *Water Supply*, 20(3), 984-996. <https://doi.org/10.2166/ws.2020.021>
- Yazarlou, T., & Saghafi, M. D. (2021). Investigation of Plans Shape and Glazing Percentage for the Energy Efficiency of Residential Buildings. *Energy Engineering*, 118(6). <https://doi.org/10.32604/EE.2021.017282>
- Zobaa, A. F., & Bansal, R. C. (Eds.). (2011). *Handbook of renewable energy technology*. World Scientific. <https://doi.org/10.1142/7489>

## ACKNOWLEDGEMENTS

Yashar Aryanfar, Ingrid Iovana Espinoza Burgos and Luis Javier Márquez Figueroa received a maintenance grant from the National Council of Humanities, Science and Technology of Mexico (CONAHCYT). Our thanks to CONAHCYT.



## AUTHORS

### Yashar Aryanfar

Affiliation: Department of Electric Engineering and Computation. Autonomous University of Ciudad Juárez. Chihuahua, México  
ORCID: <https://orcid.org/0000-0002-0835-7894>  
e-mail: yashar.aryanfar@gmail.com & al216622@alumnos.uacj.mx

### Jorge Luis García Alcaraz

Affiliation: Department of Industrial Engineering and Manufacturing, Autonomous University of Ciudad Juárez. Chihuahua, México  
ORCID: <https://orcid.org/0000-0002-7092-6963>  
e-mail: jorge.garcia@uacj.mx

### Julio Blanco Fernandez

Affiliation: Department of Mechanical Engineering, University of La Rioja. C/ San José de Calasanz 31, Logroño 26004, Logroño, La Rioja, Spain  
ORCID: <https://orcid.org/0000-0002-7351-5342>  
e-mail: julio.blanco@unirioja.es

### Ingrid Iovana Burgos Espinoza

Affiliation: Department of Electric Engineering and Computation. Autonomous University of Ciudad Juárez. Ciudad Juárez, Chihuahua, México  
ORCID: <https://orcid.org/0000-0003-3280-4321>  
e-mail: al220859@alumnos.uacj.mx

### Luis Javier Márquez Figueroa

Affiliation: Department of Electric Engineering and Computation. Autonomous University of Ciudad Juárez. Ciudad Juárez, Chihuahua, México  
ORCID: <https://orcid.org/0000-0002-8285-1911>  
e-mail: al216623@alumnos.uacj.mx

**How to cite:** Aryanfar, Y. et al. (2023). A comparative study of a trans-critical carbon dioxide cycle powered by a single flash geothermal cycle with/without economizer operating modes. CT&F-Ciencia, Tecnología y Futuro 13(2), 5 - 13.

## NOMENCLATURE

### Latin

$E$	Exergy [kW]
$e$	Specific exergy [kW/kg]
$h$	Specific enthalpy [kJ/kg]
	Mass flow rate [kg/s]
$P$	Pressure [MPa]
	Heat flow rate [kW]
$s$	Specific entropy [kJ/kg.K]
$T$	Temperature [°C]
	Power output [kW]
$x$	Quality [-]

### Greek Letters

$\eta$	Efficiency
$\emptyset$	maintenance coefficient

### Subscripts

$e$	in
$o$	out
$s$	isentropic
$tot$	total
$0$	Dead state
$Tur$	Turbine
$cond$	Condenser
$ex$	Exergy
$en$	Energy
$in$	inlet
$k$	component
$fuel$	Fuel
$net$	Network
$Pump$	pump

Ecopetrol declara su compromiso para mitigar el cambio climático.

En el Centro de Innovación y Tecnología - ICP creamos soluciones tecnológicas para reducir las emisiones de carbono.

**SOMOS ENERGÍA  
QUE TRANSFORMA  
A COLOMBIA**

  
**ecopetrol**