


## Peak flows hydrological analysis in the upper basin of the Medellín river (Colombia) with stationary and non-stationary conditions

### Análisis hidrológico de caudales máximos en la cuenca alta del río Medellín (Colombia) con condiciones estacionarias y no estacionarias

Juan Guerrero-Gallego<sup>1</sup>  Gabriel Rosado Cantillo<sup>1</sup>  Luis F. Carvajal-Serna<sup>2</sup>  Llian Posada García<sup>2</sup> 

<sup>1</sup>Ingeniero Civil, Universidad Nacional de Colombia, Posgrado en Ingeniería de los Recursos Hidráulicos, Medellín

<sup>2</sup>Universidad Nacional de Colombia - Sede Medellín - Facultad de Minas - Departamento de Geociencias y Medio Ambiente - Posgrado en Aprovechamiento de Recursos Hidráulicos.

## Abstract

In the upper basin of the Medellín River (Colombia) a hydrologic study was carried out to analyze the rainfall-runoff relationships in an event-scale, for the estimation of the maximum streamflow regime associated with different return periods in the basin and its tributary sub-basins, through hydrological modeling that considers the existence of climate change. This study is composed of the characterization of the basin of the study area, as well as the hydrological characterization, which includes the analysis of measured data with high temporal resolution of precipitation and the river levels. Different methods were considered to obtain the necessary information for the execution of a semi-distributed hydrological modeling activities, using the HEC-HMS. The model was calibrated by the simulation of 5 maximum streamflow events of the year 2021 and then it was run with different configurations of the antecedent moisture condition, rainfall-runoff models and stationary and non-stationary conditions (in rainfall), the latter to assess potential effects of the climate change. According to the results, the relative differences between the modeling cases with stationary and non-stationary conditions are, on average, negligible, with values between 3 and 5% in the considered cases, with the non-stationary cases having higher magnitudes of streamflow.

## Resumen

En la cuenca alta del río Medellín (Colombia) se realizó un estudio hidrológico con el fin de analizar las relaciones lluvia-escorrentía a escala de eventos en esta zona, para la estimación del régimen de caudales máximos asociados a diferentes períodos de retorno en la cuenca del río y subcuencas tributarias, mediante modelación hidrológica considerando cambio climático. Este estudio está compuesto por la caracterización de la cuenca de la zona de estudio, así como la caracterización hidrológica, la cual abarca el análisis de datos medidos con alta resolución temporal de precipitación y niveles del río. Se tienen en cuenta también diferentes métodos para la obtención de la información necesaria para la correcta ejecución de actividades de modelación hidrológica semidistribuida, utilizando el software HEC-HMS. El modelo fue calibrado simulando 5 eventos máximos de caudal del año 2021, y luego ejecutado con distintas configuraciones de condición de humedad antecedente, modelos lluvia-escorrentía y la consideración de condiciones estacionarias y no estacionarias (en la precipitación), estas últimas con el fin de evaluar potenciales efectos debido al cambio climático. Según los resultados obtenidos, las diferencias relativas entre los caudales máximos obtenidos simulando las curvas IDF estacionarias y no estacionarias (estos últimos siendo usados como proxy para condiciones de cambio climático) no presentan diferencias significativas y oscilan entre 3-5%, obteniéndose las mayores magnitudes en los casos no estacionarios.

**Keywords:** peak flows, Hydrological semi distributed modeling, climate change, non-stationarity conditions

**Palabras clave:** Caudales máximos, Modelación hidrológica semidistribuida, cambio climático, condiciones no estacionarias.

### How to cite?

Guerrero-Gallego, J., Rosado, G., Carvajal-Serna, L.F., Posada, L., Peak flows hydrological analysis in the upper basin of the Medellín river (Colombia) with stationary and non-stationary conditions Ingeniería y Competitividad, 2024, 26(2)e-20112931.

<https://doi.org/10.25100/iyv26i2.12931>

Recibido: 26-04-23

Aceptado: 06-01-24

### Correspondencia:

jjguerre@unal.edu.co

This work is licensed under a Creative Commons Attribution-NonCommercial-ShareAlike4.0 International License.



Conflict of interest: none declared



### Why was it carried out?

It is very important to do good estimations of hydrological risk conditions in flood studies and establish a guide for maximum peakflows estimation on highly urbanized and mountain areas in Colombia.

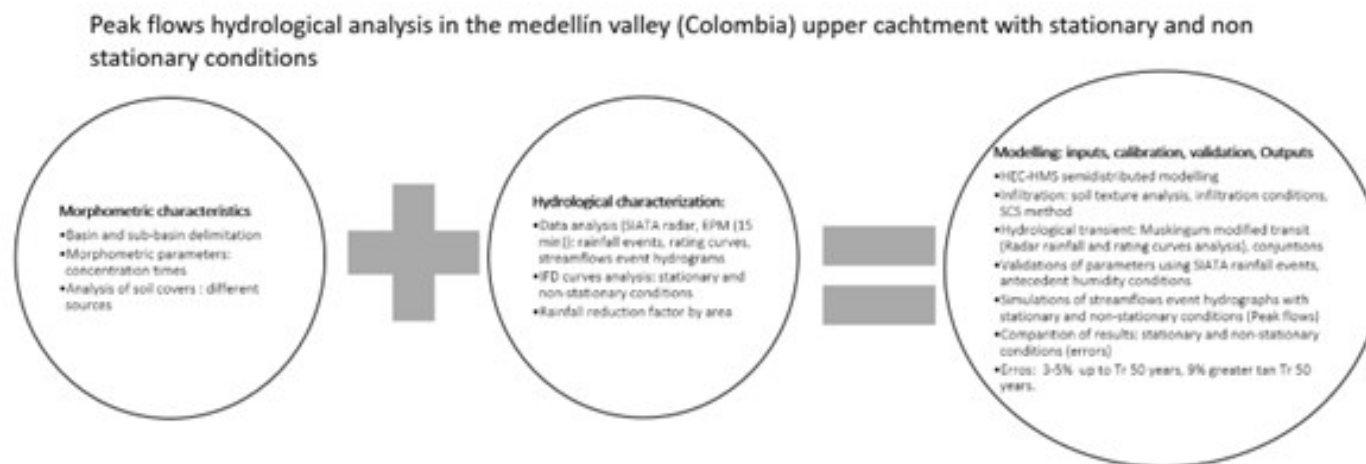
### What were the most relevant results?

This work shows the importance of hydrological risk estimation in stationary and non-stationary conditions to take into account climate change and its impact on urban areas under different antecedent humidity conditions. According to the results, the differences between the stationary and non-stationary cases are between 3-5% for return periods up to 50 years and higher peakflows for the non-stationary cases. For return periods greater than 50 years, the differences increase up to 9% as the return periods increase. This result indicates that for extreme events, it begins to become important to take into account the variability in statistical parameters such as the mean and the variance in the frequency analysis.

### What do these results provide?

The results show the need for new strategies or methodologies for hydrological risk estimation with climate change and its impact on design peakflows on highly urbanized areas.

### Graphical Abstract



## Introduction

In addition to the natural variability of the hydrological cycle variables, it is necessary to consider climate change associated with human activities, which refers to changes in the composition of the global atmosphere and the long-term average state of the climatic characteristics due to anthropic (1, 2). The observed changes in the hydrometeorological data, such as air temperature and precipitation (3), the significative increase of the peak flows and the frequency of extreme events (e.g. storms and droughts) are present in study area (the South part of the Aburrá River valley (also known as Medellín River), located in Medellín, Colombia). There is a significant increase in the flows of the Medellín River (3, 4), which in recent years has caused overflows at different points along its channel, which presents a challenge for the communities and public administration in its area of influence and river flood area.

The processes associated with climate change can affect the shape of the intensity-frequency-duration (IFD) curves and the rainfall - runoff processes for the estimation of maximum flows (4), which establishes the need of considering climate variability scenarios in the estimation of extreme events. The previous issue can have a great impact in the relationship between water with climate change, crises related to energy, food supply and price, population growth, changes in economic activities and land use and with social and financial market problems. Therefore, it is time that these relationships to be included in the compromise solutions by decision makers (5, 6).

Due to the increase in the intensity and frequency of precipitation in the Aburrá Valley (Antioquia, Colombia) (7, 8), the continuous anthropization of the basin, changes in land use, factors associated with climate change and the intensification of the effects of the ENSO phases (9, 10), the characterization and modeling of peak flows with stationary and non-stationary conditions are required by the government entities in the upper basin of the Medellín River. This study shows the peak flow modeling for different return periods and stationary and non-stationary conditions with different soil moisture conditions. This study captures both current conditions and future conditions of hydrological behavior of the basin. The results of this study can serve the input for planning, risk management and water resources management. Also, for the public administration have a better understanding of the behavior of hydrological processes for a good decision making.

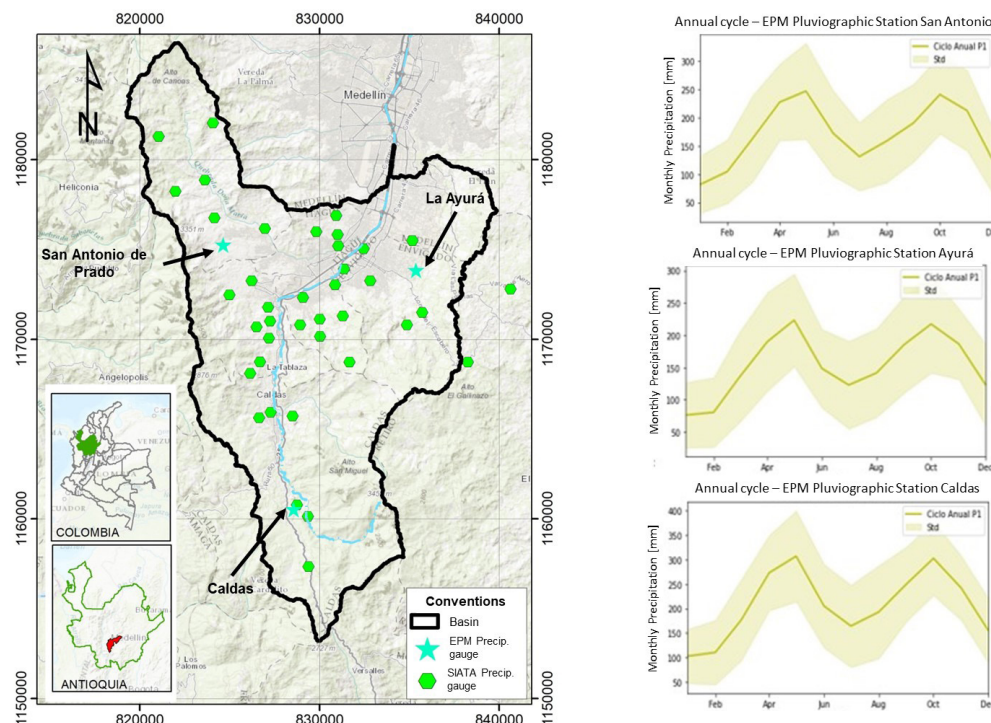
This work shows the hydrological study carried out in the upper basin of the Medellín River (Colombia), which is divided into three groups of activities. First, the characterization of the study basin was carried out, which consists of the analysis of the relief, coverage and land uses and the calculation of geomorphological parameters and infiltration behavior in the sub-basins. Then, the hydrological characterization was carried out, which consists of the analysis of data from the existing rainfall stations in the basin, and the data of levels and flows measured in the main channel of the river. The data used in this study comes from precipitation gauges installed by the Public Services of Medellín (in Spanish, Empresas Públicas de Medellín, EPM)) and precipitation and stream level gauges of the Early Warnings System of the Aburrá Valley (in Spanish, Sistema de Alerta Temprana del Valle de Aburrá, SIATA). Through the analysis of the precipitation data, the design precipitation and the precipitation events were obtained and used as input data for the modeling.

Finally, hydrological modeling activities were implemented, which were carried out using the HEC-HMS of system of the United States Army Corps of Engineers (11). These activities include calibration and validation tests using information measured in the study area (level stations), as well as sensitivity to some parameters such as lag time or antecedent moisture conditions for the hydrological loss model and the rainfall-runoff models to be used.

## Methodology

The Aburrá River Valley or Medellín River is located in the Central Mountain range of the Colombian Andes, between latitudes 6°00'N and 6°30'N and longitudes 75°15'W and 75°45'W, with an approximate length of 100 km and a variable width of 30 km in the widest sector and 10 km in the narrowest sector. It comprises an area of approximately 1240 km<sup>2</sup> (12). The area under study corresponds to the upper part of the Medellín River basin, which contains the municipalities

of Caldas, La Estrella, Sabaneta, Itagüí and Envigado. These belong to the Metropolitan Area of the Aburrá Valley in the department of Antioquia, Colombia. Figure 1 shows the basin of study and its location in the Colombian national territory. The basin of the Medellín River was delimited from its source, in the sector known as La Clara in the municipality of Caldas, to the mouth of the La Presidenta stream, one of the main tributaries of the Medellín River, located in the El Poblado neighborhood of the municipality of Medellín. The basin delineated for this study has a total drainage area of 306 km<sup>2</sup>.



**Figure 1.** Study zone: Upper Basin of the Medellín River. The left panel shows the localization of the basin and of the precipitation gauges used in this study (both EPM and SIATA). On the right panel is shown the annual cycle of precipitation from historical data in the EPM gauges San Antonio de Prado, Ayurá and Caldas.

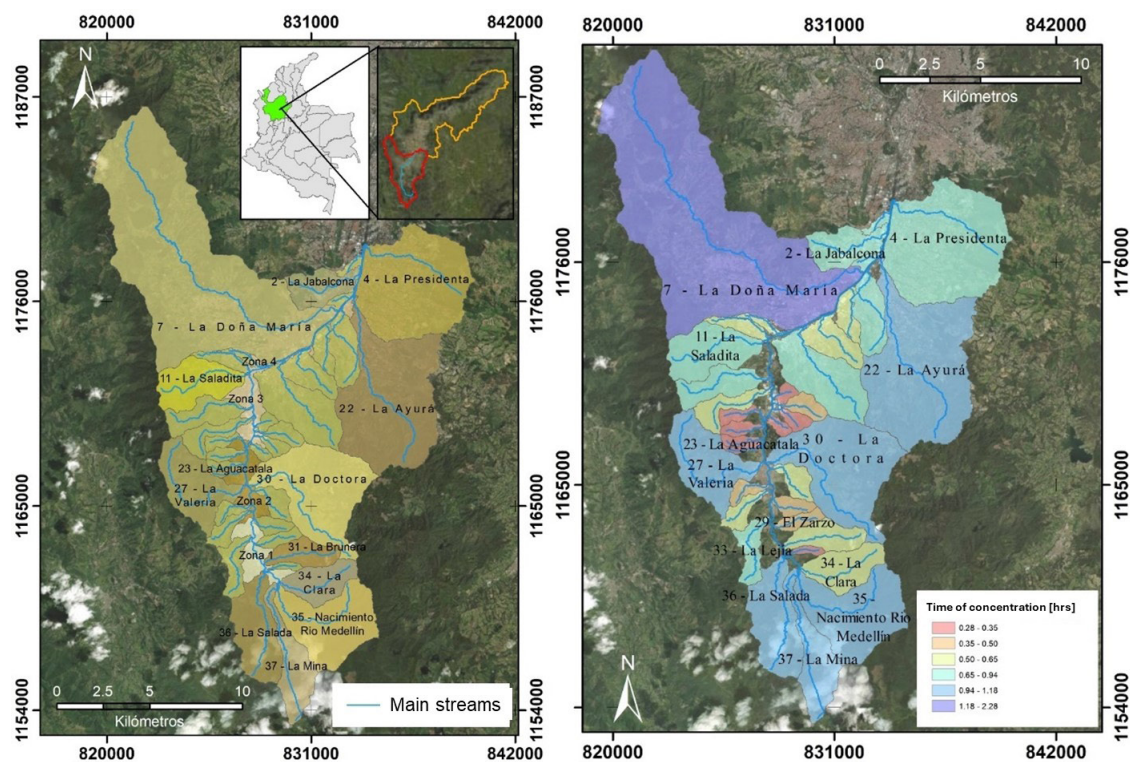
The region in which this basin is located is characterized by high climatic variability, which is reflected in variables such as precipitation, largely influenced by features such as the orographic configuration of the area (the Andes Mountain Range) and different macroclimatic phenomena such as ENSO, the Chocó Jet, Madden-Julian oscillations and latitudinal migration of the Intertropical Confluence Zone (ITCZ; 9, 10, 13). The effect of this last process can be seen in the annual cycle of precipitation (Figure 1), which presents a bimodal behavior with two annual maximums (around the trimesters of March - May and September - November) and two annual minimums (around the trimesters of June - September and December - February).

As it was said before, this hydrological study is divided into three parts. Firstly, the characterization of the basin, in which the characteristics related to the shape and relief of the basins within the area of influence of the project are studied. Likewise, the relationships and parameters that allow us to understand the hydrological behavior of each of the basins and the network of canals that make them up are analyzed. Secondly, there is the hydrological characterization, where the data from measurements of hydrological variables, in this case precipitation, levels and streamflow are analyzed to establish the historical behavior of the surface hydrological processes in the area. This permits to make calculations of projections of the probable behavior of these processes. Finally, there are hydrological modeling activities, which are based on the results obtained in the characterization of the basin and hydrological characterization. For these activities, semi-distributed

hydrological modeling strategies were implemented, using the HEC-HMS software developed by the United States Army Corps of Engineers (11).

### Basin characteristics

For the morphometric analysis, the cartography data used were processed via Geographic Information systems, supported by digital hydrography produced by the Agustín Codazzi Geographic Institute – IGAC (12) and geospatial data provided by the Aburrá Valley Metropolitan Area (AMVA; 14, 15). To estimate the morphometric parameters, the digital terrain model provided by the SIATA team was used, which has a spatial resolution of 2.0 x 2.0 m. The Medellín River basin was divided into 37 sub-basins (with areas greater than 0.6 km<sup>2</sup>) and 4 drainage zones lateral to the main channel of the Medellín River (which group together the areas not included in the larger sub-basins, closer to the river). This delineation of the sub-basins can be seen in the left panel of Figure 2. There are some sub-basins with a large area, such as the Doña María stream (78.84 km<sup>2</sup>), La Ayurá (33.89 km<sup>2</sup>), La Presidenta (29.51 km<sup>2</sup>) and La Doctora (11.3 km<sup>2</sup>), which amount to around 50% of the total area of the basin of study.



**Figure 2.** Sub-basins of the Upper Basin of the Medellín River (left panel) and their times of concentration (in hours; right panel).

Besides the area of the sub-basins, other morphological parameters such as the average channel and sub-basin slope, the difference between the maximum and minimum height of the sub-basin, were used to calculate the times of concentration of every sub-basin considered. The time of concentration is an important input parameter for the hydrological analysis and twelve calculation methods were used to calculate it, including Temez (1978), Kirpich (1990), California Culverts Practice (1942), SCS - Ranser (1958), Williams (1922), Johnstone and Cross (1949), Linsey, Snyder, Ventura-Heron (1978) (16). The value of the time of concentration for each subbasin was defined as the average value (removing outliers) of the results obtained by applying of all the methods mentioned. The values obtained for each sub-basin can be observed graphically in the right panel of Figure 2. The results show values up to 2.28 hrs. as is the case of the Doña María sub-basin.



To estimate hydrological losses for each subbasin, the Curve Number methodology of the SCS - Soil Conservation Services (15) was used. This was done using maps of soil cover and type from the IGAC (12) and the cover and land use maps of the Planning and Management Plan for the Hydrographic Basin of the Aburrá River - POMCA (17), which is based on the Corinne Land Cover methodology proposed by the Institute of Hydrology, Meteorology and Environmental Studies – IDEAM (18). According to the IGAC information, one part of the Aburrá Valley basins is composed of heterogeneous soils with good or excellent drainage and were classified in group A. The other part is composed of soils with fine to medium textures and these were classified as type B. The urban areas present in the basin have an unfavorable drainage condition and these are classified in group D. The calculated curve number for a sub-basin is derived by relating the soil group to the specific cover types and land uses within each sub-basin. Each combination of soil group and land cover use is assigned a curve number based on the Corine Land Cover methodology tables. This process is applied to every soil group-land use and cover polygon, resulting in a list of curve numbers for each sub-basin. Then, an area-weighted average is computed to determine the curve numbers for the entire sub-basin. These are showed in Table 1.

Table 1. Sub-basins curve number estimations

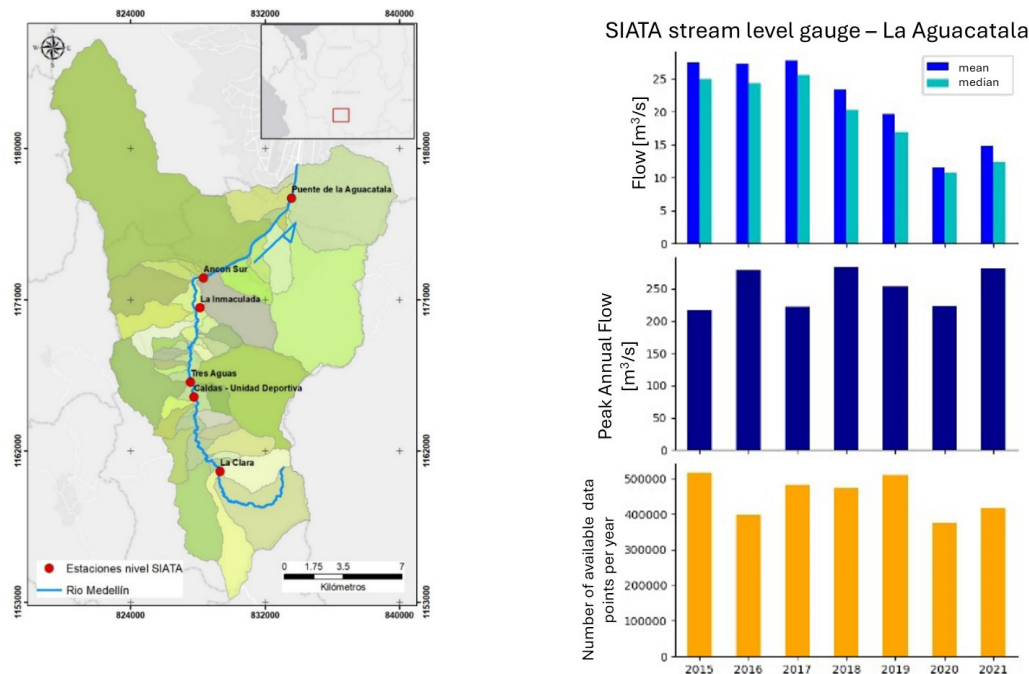
Sub-basins	CN II	CNIII	Imp* [%]	Sub-basins	CN II	CNIII	Imp* [%]
1	98.00	99	100%	2 - La Jabalcona	89.81	96	83%
3	98.00	99	100%	4 - La Presidenta	79.61	90	65%
5	98.00	99	100%	6	94.16	98	100%
7 - Doña María	60.58	78	25%	8 - La Sucia	91.12	96	88%
9 - La Heliadora	88.84	95	84%	10 - La Honda	86.17	94	80%
11 - La Grande	49.60	70	14%	12 - La Tablacita	73.55	87	47%
13 - La Bermejala	51.61	72	12%	14 - Miraflores	65.96	82	37%
15 - La Doctora	65.14	82	40%	16 - Palosanto	60.89	79	33%
17 - La Polvosa	59.54	78	30%	18 - La Culebra	55.06	74	32%
19	71.28	86	52%	20 - La Raya/La Manuela	55.88	75	29%
21 - La Cano	50.99	71	8%	22 - La Zúñiga/Ayurá	56.76	76	29%
23-La Aguacatala	64.02	81	32%	24 - La Corrala	70.27	85	50%
25 - La Chuscala	63.55	81	34%	26	39.45	60	2%
27 - La Valeria	49.56	70	4%	28 - La Loca/La Piedrahita	53.43	73	8%
29 - El Zarzo	46.45	67	0%	30 - La Miel	47.39	68	8%
31 - La Brunera	40.30	61	0%	32 - La Chapola	46.39	67	0%
33 - La Lejía	52.37	72	20%	34 - La Clara	40.65	62	0%
35 - Nacimiento río Medellín	42.1	63	0%	36 - La Salada	51.11	71	8%
37 - La Mina	45.6	66	2%				
Zona 1	59.86	78	23%	Zona 2	74.82	88	57%
Zona 3	86.07	94	79%	Zona 4	98.22	99	89%

\*: Imp: percentage of impervious soil

## Hydrological characterization

The hydrological characterization was done using two groups of information: rainfall and level data from measurements in stations located within the basin and the IFD curves (stationary and non-stationary) of the area obtained by Grajales (7, 8). The design rainfall estimation was done for return periods from 2 to 100 years. EPM has 3 stations with daily resolution (Ayurá, Caldas, San Antonio de Prado) and a record spanning from 1972 to 2020. The IFD curves were estimated in these sites. SIATA has 39 precipitation stations and 6 stream level measurement stations within the study area. Record for these variables is available from 2015 to 2021, with a time step of 1 minute. In the Figure 1 the spatial distribution of the rainfall stations used in the analysis is shown for both EPM and SIATA. Figure 3 shows, in its left panel, the SIATA level and surface velocity stations along the Medellín River. Also, it is shown the behavior of the maximum and average flows in one of the stations used in this study, the La Aguacatala station. An historical analysis of precipitation and stream flows was done to select events for the calibration and validation processes in the hydrological modeling phase, as well as for the estimation of the parameters required for the evaluation of flood transit in the Medellín River channel. For these analyses, flow rate curves were estimated.

The quality and quantity of Aburrá valley basin data help to do the simultaneous analysis of events (rainfall-flow hydrographs) at the different streamflow stations installed along the river. To do this, three stations were selected from the six available stations: La Clara, Tres Aguas and La Aguacatala stations to characterize the main channel of the Medellín River in its upper, middle, and lower course. for modeling activities and estimations of floodings.

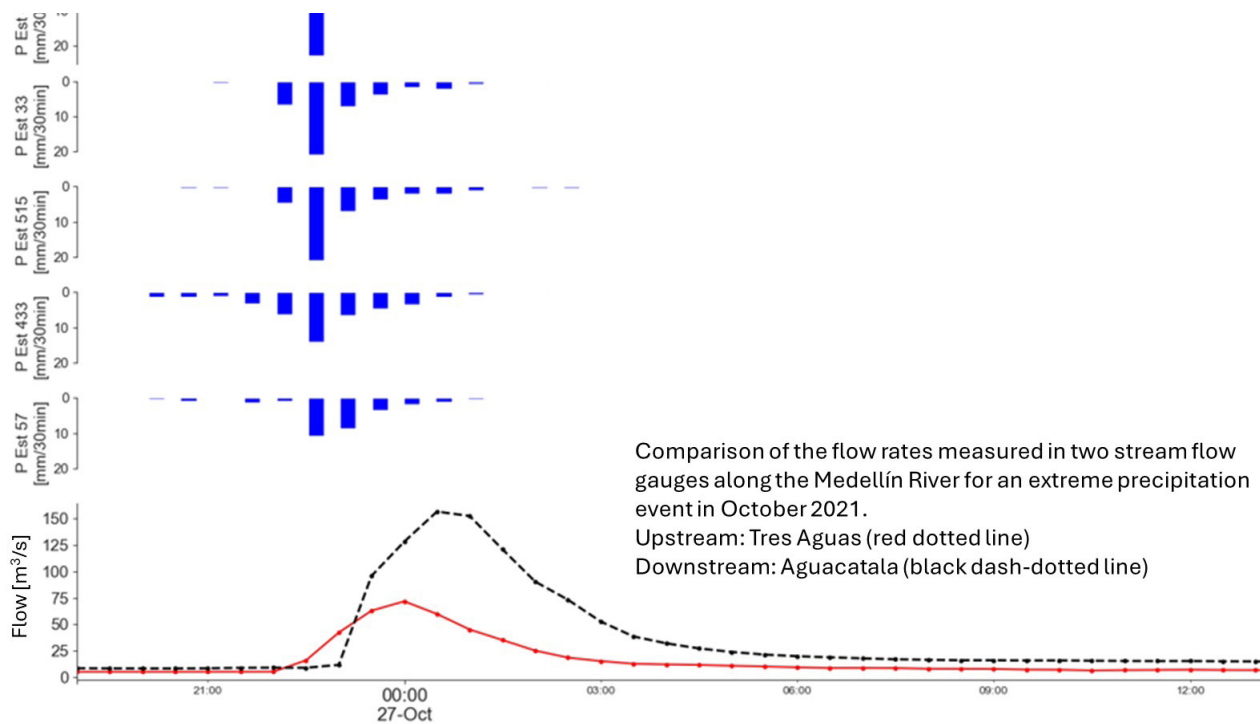


**Figure 3.** Location of the stream level and surface velocity gauges along the Medellín River (SIATA) (left pane) and the flow rate data (annual peak, mean and median) in one of these gauges (La Aguacatala; right pane). To do the hydrological transit along river and their tributaries the Muskingum method was chosen as it is available in the HEC-HMS system, and it is an easy method to implement, and it also gives good results. The Muskingum method represents flow-storage relationships within channel. Figure 4 shows as an example, a flooding event recorded in the month of October 2021 at the Aguacatala and Tres Aguas stations, with their hyetographs recorded in the surrounding precipitation gauges. As expected, the hydrograph recorded at the downstream stations (Aguacatala station) presents flow values that are significantly higher than those recorded at the upstream station (Tres Aguas station). This is due to the accumulation area and the lateral contributions that take place in the study basin.

The traditional Muskingum method is not designed to take into account lateral contributions, so the three-parameter Muskingum method presented in O'Donnell (19) was used, which assumes that the lateral flow varies linearly along the reach of analysis and can be represented as a factor of the inflow, as follows:

$$S = K[XI(1 + \alpha) + (1 - X)Q] \quad [1]$$

As defined by O'Donnell (19),  $S$  represents the storage of water in the river reach during the flood event,  $I$  and  $Q$  are, respectively, the inflow and outflow in the reach,  $K$  is storage coefficient of the reach and can be thought of as the time of travel of the pulse of the flood and  $X$  is a weighting factor (dimensionless), associated with relative importance of both the inflow and outflow in determining the storage on the reach. In the basic method it is assumed there is no lateral inflow to the reach, but following O'Donnell, with the  $\alpha$  coefficient that can be accounted for.



**Figure 4.** Flood hydrograph of October 27<sup>th</sup>, 2021, recorded at the Aguacatala and Tres Aguas stream flow measuring stations and the rainfall hyetographs measured in several nearby precipitation gauges (SIATA).

In the calibration step for the application of the O'Donnell method, the average values of relative differences of 7% for the section between Tres Aguas and Aguacatala and 10% for the river section between La Clara and Tres Aguas were obtained. So, it can be considered that the method gives useful results for hydrological modeling, using these results as input. Table 2 shows the parameter values of the Muskingum method that serve as input values in the HEC-HMS.

Table 2. Values of parameters to modified Muskingum method for the two reaches of the Medellín River considered in this study

River reach	K (hrs)	X	$\alpha$
La Clara (169)- Tres Aguas (106)	1.36	0.36	1.36
Tres Aguas (106)- La Aguacatala (94)	1.92	0.25	1.68



Stationary IFD curves generated by EPM were used for its measurement stations and the non-stationary IFD curves were taken from the study carried out by Grajales (7, 8) based on historical series at a resolution of 15 minutes in 34 rainfall stations. For the IFD curves, non-stationarity (temporal variations in the mean of the time series) is more marked in durations less than 50 minutes with insignificant differences in return periods less than 5 years (Figure 5).

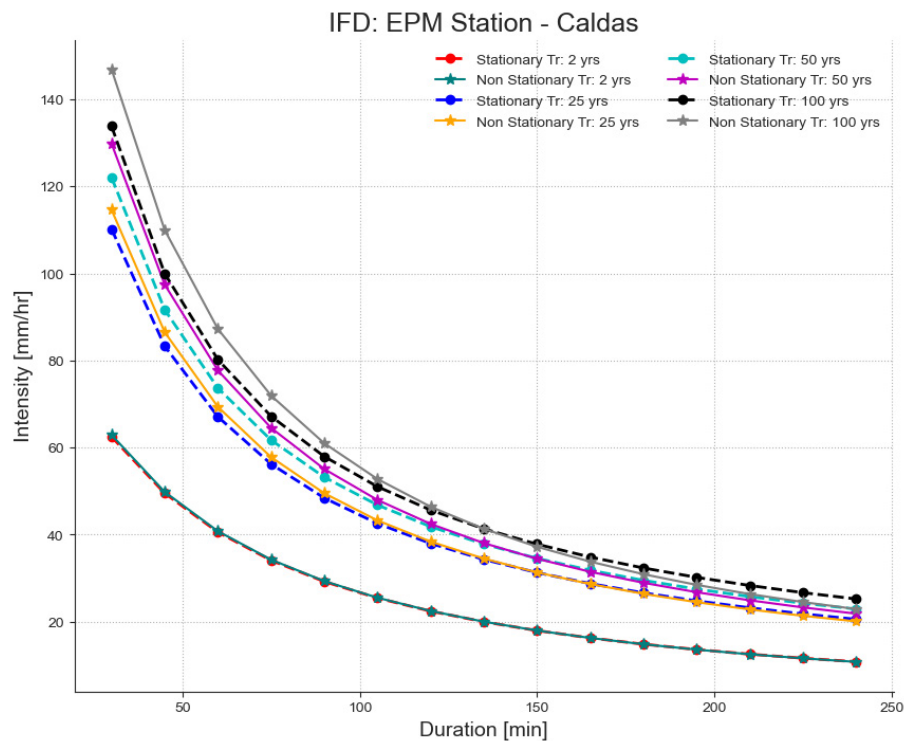
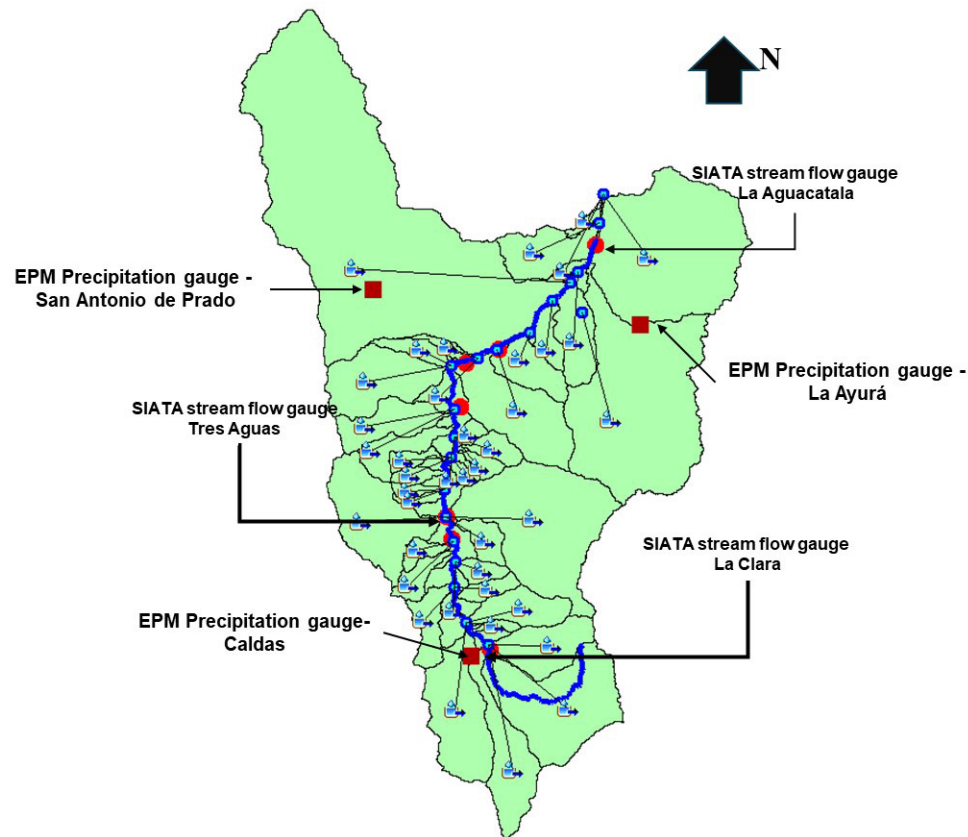


Figure 5. Comparison of stationary and non-stationary IFD curves for the EPM Station - Caldas

#### Hydrological semi distributed modeling: HEC-HMS

For the transformation of direct precipitation into runoff, a semi distributed hydrological model of floods is proposed in which the study basin was divided into a series of interconnected sub-basins and channels. This conceptualization is enough to model spatiotemporal variability of the geomorphological and climatic characteristics of the basin under study and for which the HEC-HMS software is used (11). Figure 6 shows the graph of the topology of the model and its spatial distribution. The basin is represented by 41 sub-basin models (37 tributary basins and 4 lateral drainage zones), 20 confluence or discharge points and 19 river sections to transit the hydrographs.



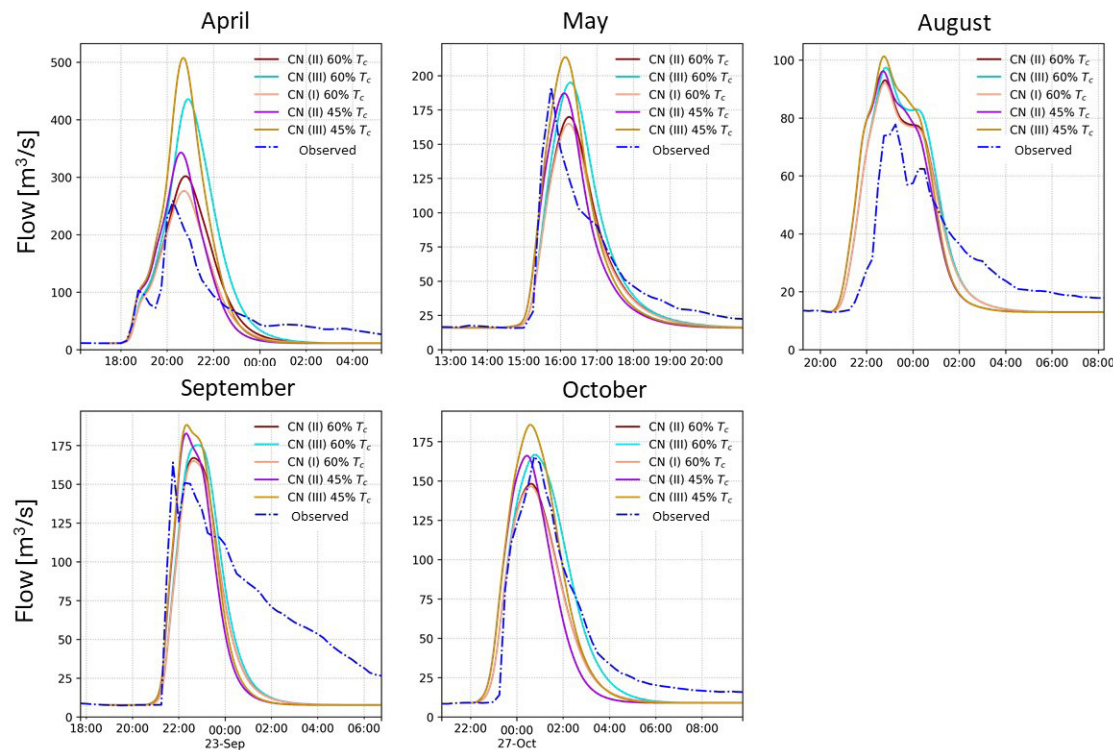
**Figure 6.** Topological representation of the Upper Basin of the Medellín River in the hydrological semi distributed model HEC-HMS with markers for the measurement gauges. Red wine squares: EPM precipitation gauges, red circles: SIATA stream flow gauges, blue line: main streamline of the Medellín River.

The concept of area reduction factors (ARF) by Bell (20) was introduced. This was done to include the effect of rainfall spatial variability. The ARF compares the maximum precipitation of one of the recording stations, for the different return periods with the maximum precipitation and then these are weighted using the Thiessen factors (Voronoi Polygons were drawn for the precipitation stations considered) of each of the stations. This procedure is carried out for various closure points within the study basin. This is important to analyze how the reduction factor changes according to the influence of the rainfall stations. ARF values obtained range between 0.69 and 0.74, therefore an average factor of 0.72 was used.

## Results and discussions

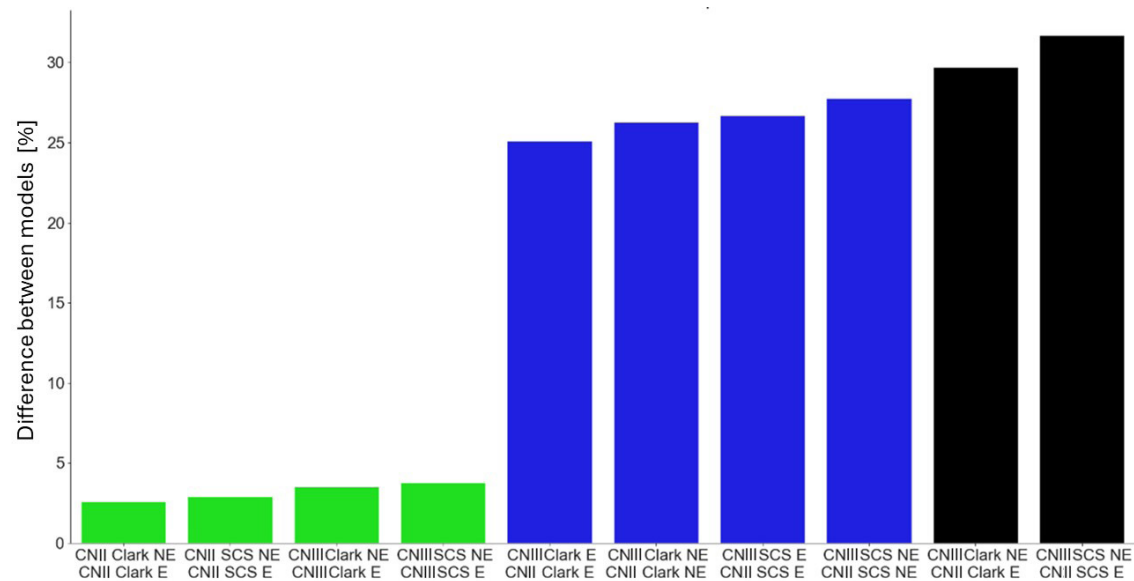
To validate the hydrological model, five maximum monthly peak flow events from 2021 were selected: April, May, August, September, and October. These occurrences were recorded at the Aguacatala SIATA level station, the nearest stream flow gauge to the basin outlet. Additionally, rainfall stations nearby were chosen using Thiessen polygons (also referred to as Voronoi polygons). Three hydrological models were implemented and analyzed: the one from the Soil Conservation Services (SCS), Clark and Snyder (17, 21), the latter of which yielded poorer results compared to the first two during the initial stages of modeling activities, which is why it was discarded early on. Figure 7 presents a summary of the validation results, for various combinations of factors, including the kind of curve number and the calculation of the lag time (either 45% or 60% of the time of concentration). For most events tested, these models were capable of adequately representing the behavior of the maximum flow regime and its hydrographs (observed minus simulated), with relative differences ranging between 1-20% in the magnitude of the peak flow and differences of less than 20 minutes in the time-to-peak. Additionally, the hydrological response of the basin is strongly associated with the saturation conditions of the basin. There are better adjustments for

the CNII and CNIII conditions with a lag time equivalent to 60% of the concentration time of the subbasins. The use of CNII or CNIII will depend on the intra-annual climatic condition, e.g. if the season is rainy or dry. On the other hand, no significant differences are noted between the Clark and SCS hydrographs. The bigger attenuation to peak flows is for the Clark hydrograph.



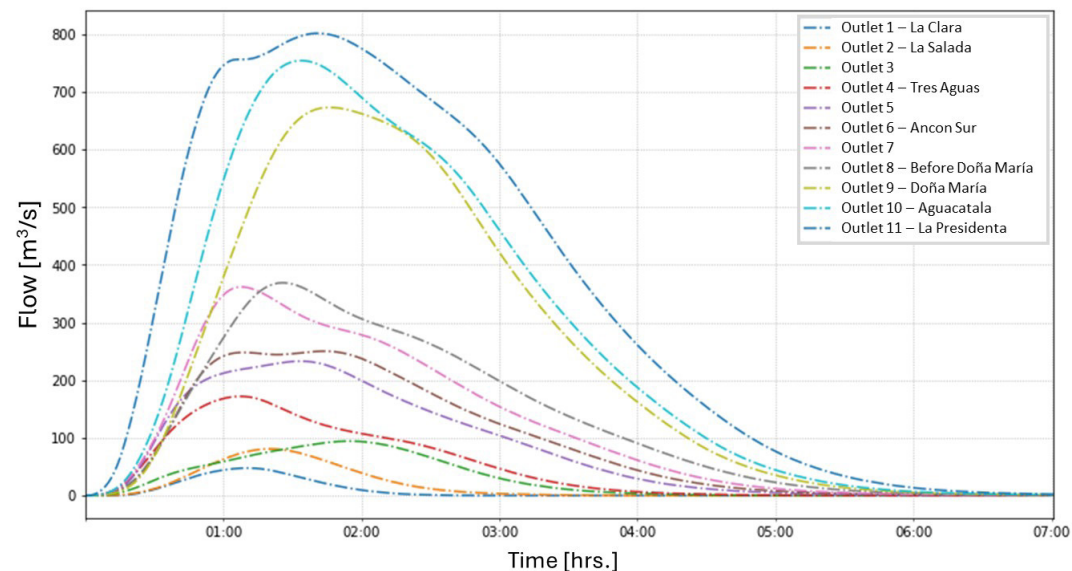
**Figure 7.** Validation of the hydrological model at La Aguacatala streamflow gauge (SIATA) for the five greatest peak flows recorded in year 2021, which corresponded to the months of April, May, August, September, and October.

Figure 8 shows the differences between the configurations implemented in the hydrological models considering stationary (E) and non-stationary (NE) context, antecedent soil moisture condition normal (CNII) and humid (CNIII) and the rainfall models runoff (Clark and SCS). The graph was constructed by calculating the average of the relative error between the models that have the same parameter configuration, for each of the output points. No significant differences ( $< 5\%$ ) are observed between the results of the models with stationary and non-stationary rainfall conditions, because, as mentioned above, the differences between rainfall become significant for return periods greater than 50 years. However, important and significant differences are observed in the magnitude of the peak flows, when the antecedent moisture conditions are changed, between normal soil and humid soil (Conditions II and III), this is due to the soil being saturated at the time of rain, generating greater effective precipitation, a situation that usually happens in the rainy seasons in the Aburrá Valley.



**Figure 8.** Relative differences (in percentage) between implemented models. On the x-axis are the two models compared with the following naming convention: Type of CN used on that model (either CN II or CNIII), Type of hydrological model (either SCS or Clark) and stationary (E) or non-stationary (NE) condition.

Analyzing the simulation results for the maximum events that occurred in the year 2021 in the reach between the SIATA stream flow level gauges Tres Aguas and La Aguacatala, and based on the results obtained from Figure 8, the selected conditions for the model are an antecedent moisture condition for the curve number type III and a time lag equivalent to 60% of the concentration time. In general, this combination describes the best the general behavior of the different events. Figure 9 shows the response hydrographs obtained for the 100-year return period at different outlet points along the channel of the Medellín River, with an antecedent condition of moisture III (wet soil), Clark's rainfall-runoff model and rainfall in non-stationary condition.



**Figure 9.** Response hydrograph for the 100-year return period flood, in different outlets along the main channel of the Medellín River, using the Clark rainfall-runoff model, with a curve number with an antecedent moisture condition type III and in non-stationary conditions.

## Conclusions

The results of this study capture the expected behavior of surface runoff in the basin of study. The comparison was made using different configurations of modeling, as well as the validation using extreme precipitation and flooding events, measured within the basin, which is a significant advance in the study area. Previous studies have not had enough records to do this type of analysis of validation. The existence of measurement networks for hydrometeorological variables (such as the ones from the SIATA and EPM), with a good density and quality data allowed validation and calibration of the hydrological model with low values of error.

To calibrate the model, five events of maximum flows that occurred in 2021 (recorded at La Aguacatala and Tres Aguas stations) were used. The results allowed to identify that the antecedent moisture conditions in the basin have a significant influence on the hydrological response. For this reason, the maximum peak recorded flow rates presented a better fit with a curve number with antecedent moisture condition type III and a lag time of 60% of the concentration time.

Stationary and non-stationary scenarios were also implemented to estimate the design rainfall events. It is important to begin considering the trends of the records on the design flows methods and to do inference of both the natural climate variability conditions and the effects of climate change.

The results show that the differences between the stationary and non-stationary cases (the latter being used as a proxy for climate change conditions) are significant on average, with percentage differences ranging between 3-5% among the cases considered, with greater magnitudes observed in non-stationary cases. However, these differences increase as the return period increase, tending to be up to around 9%, which indicates that for extreme events it is important to consider the variability in statistical parameters such as mean and variance when conducting frequency analysis for design, prevention, and mitigation of extreme events.

## Acknowledgments

The authors thank the Aburrá Valley Metropolitan Area for funding the CI 743 project of 2021, in which this study is framed. Also, to the SIATA and EPM teams for providing the information used for this study.

## References

- [1] Pachauri RK, Allen MR, Barros VR et al. Climate change 2014 synthesis report. contribution of working groups I, II, and III to the fifth assessment report of the Intergovernmental Panel on Climate Change. IPCC, Geneva, Switzerland. 2014. Available at: <https://research-repository.uwa.edu.au/en/publications/climate-change-2014-synthesis-report-contribution-of-working-grou>
- [2] Salas JD, Obeysekera J. Revisiting the concepts of return period and risk for nonstationary hydrologic extreme events. *Journal of Hydrologic Engineering* [Internet]. 2014; 19(3): 554-568. Available at: [https://doi.org/10.1061/\(ASCE\)HE.1943-5584.0](https://doi.org/10.1061/(ASCE)HE.1943-5584.0)
- [3] Arias PA, Ortega G, Villegas LD, Martínez JA. Colombian climatology in CMIP5/CMIP6 models: Persistent biases and improvements. *Revista Facultad de Ingeniería Universidad de Antioquia* [Internet]. 2021b; 100: 75-96. Available at: <https://www.doi.org/10.17533/udea.redin.20210525>
- [4] Cheng L, and AghaKouchak A. Nonstationary precipitation Intensity-Duration-Frequency Curves for infrastructure design in a changing climate. *Scientific Reports* [Internet]. 2014; 4(7093): 1-6. Available at: <https://doi.org/10.1038/srep07093>
- [5] Parry ML, Canziani OF, Palutikof JP, Van der Linden PJ, Hanson CE. *Climate Change 2007: Impacts, Adaptation and Vulnerability*. UK. Cambridge University Press, Cambridge [Internet]. 2007. Available at: [https://www.ipcc.ch/site/assets/uploads/2018/03/ar4\\_wg2\\_full\\_report.pdf](https://www.ipcc.ch/site/assets/uploads/2018/03/ar4_wg2_full_report.pdf)



- [6] World Water Assessment Programme, WWAP. The United Nations World Water Development Report 3: Water in a Changing World. Paris: UNESCO, and London: Earthscan [Internet]. 2009. Available at: <https://unesdoc.unesco.org/ark:/48223/pf0000181993>
- [7] Grajales D, Carvajal-Serna L F. Nonstationary intensity- frequency-duration curves for Medellín River basin. *Revista DYNA* [Internet]. 2019; 86 (208): 321-328. Available at: DOI:10.15446/dyna.v86n208.69300
- [8] Grajales D. Estimación de curvas intensidad-frecuencia-duración no estacionarias para el Departamento de Antioquia. Medellín. Tesis de maestría, Universidad Nacional de Colombia, Sede Medellín [Internet]. 2019. Available at: <https://repositorio.unal.edu.co/handle/unal/78309>
- [9] Poveda G. La Hidroclimatología De Colombia: Una Síntesis Desde La Escala Inter-Decadal Hasta La Escala Diurna. *Revista de la Academia Colombiana* [Internet]. 2004; 28(107): 201-222. [http://dx.doi.org/10.18257/raccefyn.28\(107\).2004.1991](http://dx.doi.org/10.18257/raccefyn.28(107).2004.1991)
- [10] Rojo JD. Spatial and Temporal Characterization of Colombia's Hydroclimatology Spatial and Temporal Characterization of Colombia's Hydroclimatology. Medellín. PhD Thesis Dissertation, Universidad Nacional de Colombia, Sede Medellín [Internet]. 2018. Available at: <https://repositorio.unal.edu.co/handle/unal/69017>
- [11] U.S. Army Corps of Engineers, Hydrologic Engineering Center. HEC-HMS Hydrologic Modeling System, User's Manual, Version 4.0, CPD-74A. Hydrologic Engineering Center. Davis, CA. 2013. Available at: [https://www.hec.usace.army.mil/software/hec-hms/documentation/HEC-HMS\\_Users\\_Manual\\_4.0.pdf](https://www.hec.usace.army.mil/software/hec-hms/documentation/HEC-HMS_Users_Manual_4.0.pdf)
- [12] Mapa Digital de Suelos del Departamento de Antioquia, República de Colombia. Escala 1:100.000. Instituto Geográfico Agustín Codazzi, Bogotá. (2014). Available at: <https://geoportal.igac.gov.co/contenido/datos-abiertos-agrologia>
- [13] Rojo JD, Mesa OJ. MJO Influence over northern South American Observations and Modeling, AGU Fall Meeting, Washington DC, 10-14 Dec 2028. <http://dx.doi.org/10.13140/RG.2.2.35057.10087>
- [14] Microzonificación sísmica detallada de los municipios de Barbosa, Girardota, Copacabana, Sabaneta, La Estrella, Caldas y Envigado. AMVA-UNA, Medellín. 2006. Available at: <http://repositorio.gestiondelriesgo.gov.co/handle/20.500.11762/19862>
- [15] Estudios y Diseño de Estabilidad de la Vía Regional Nororiental (Fases 1, 2 y 4) Asociada a la dinámica del Río Medellín y Estudios Básicos de Amenaza de Inundación Asociada al Río Medellín entre la Descarga de la Quebrada La Rodas y El Puente de La Troncal Nordeste en Barbosa. AMVA-UNAL, Medellín, 2018.
- [16] Smith R, Vélez MV. Hidrología de Antioquia. 1era. Ed. Secretaría de Obras Públicas, Antioquia-Posgrado en Aprovechamiento de Recursos Hidráulicos; Medellín. 1997.
- [17] Plan de Ordenación y Manejo de la Cuenca Hidrográfica del río Aburrá. AMVA-CORNARE-CORANTIOQUIA, Medellín. 2018. Available at: <https://cia.corantioquia.gov.co/cgi-bin/koha/opac-detail.pl?biblionumber=16645>
- [18] Leyenda Nacional de Coberturas de la Tierra. Metodología CORINE Land Cover adaptada para Colombia Escala 1:100.000. Instituto de Hidrología, Meteorología y Estudios Ambientales. Bogotá, D. C., 2010. Available at: <https://www.purace-cauca.gov.co/MiMunicipio/DocumentosGestinRiesgoYDesastres/Estudios%20gesti%C3%B3n%20del%20riesgo%20Purac%C3%A9/Leyenda%20nacional%20coberturas%20tierra.pdf>



[19] O'Donnell, T. A Direct Three-Parameter Muskingum Procedure Incorporating Lateral Inflow. *Hydrological Sciences Journal* [Internet]. 1985, 30:4: 479-496. Available at: <https://doi.org/10.1080/02626668509491013>

[20] Bell, FC. *The Areal Reduction Factor in Rainfall Frequency Estimation*. United Kingdom: Institute of Hydrology, No. 35, Wallingford, England, 1976. Available at: [https://nora.nerc.ac.uk/id/eprint/5751/1/IH\\_035.pdf](https://nora.nerc.ac.uk/id/eprint/5751/1/IH_035.pdf)

[21] Chow V, Maidment D, Mays L. *Hidrología Aplicada*. 1era. ed. Mc Graw Hill; 1994.