



UNIVERSIDAD DISTRITAL  
FRANCISCO JOSÉ DE CALDAS

# Ingeniería

<https://revistas.udistrital.edu.co/index.php/reving/issue/view/1206>

DOI: <https://doi.org/10.14483/23448393.19828>



## Research

### Safety Performance Functions for Mountain Two-lane Rural Roads in Ecuador

#### Funciones de Desempeño de Seguridad para Carreteras Rurales de Dos Carriles en entornos de montaña en Ecuador

Yasmany Damián García-Ramírez<sup>1</sup>  

<sup>1</sup>Universidad Técnica Particular de Loja (Loja, Ecuador) 

#### Abstract

**Context:** The design and operation of two-lane rural roads in mountainous terrain pose unique challenges, potentially leading to specific geometric configurations with an increased risk of road accidents. While predictive models like the Highway Safety Manual (HSM) and Safety Performance Functions (SPF) are widely used around the world, their application in Ecuador's mountainous regions remains unexplored.

**Method:** This study collected design and operational variables from 25 roads in the Ecuadorian Andes to propose SPFs specific to two-lane rural roads in mountainous environments. Crash data from 2017-2019 were utilized to develop 12 SPFs, which were further validated with information from 2020-2021. The SPFs were categorized based on three types of crashes (total, fatal + injury, property damage only) and various ranges of annual average daily traffic (AADT).

**Results:** The outcomes of this study include the development of 12 SPFs tailored to Ecuador's mountainous regions. These SPFs estimate the average expected frequency of accidents for existing conditions, alternative scenarios, or proposed new road projects.

**Conclusions:** The proposed SPFs fill a significant gap in road safety research in Ecuador, offering a valuable tool for assessing accident probabilities in two-lane rural roads in mountainous terrain. This research contributes to enhancing road safety for both existing roads and future projects, providing valuable insights for transportation planning and design. Further research opportunities lie in applying these SPFs to additional regions and refining the models based on evolving traffic and road conditions.

**Keywords:** safety performance functions, two-lane rural roads, Ecuador

#### Article history

**Received:**  
15<sup>th</sup>/Aug/2023

**Modified:**  
13<sup>th</sup>/Sep/2023


**Accepted:**  
20<sup>th</sup>/Sep/2023

*Ing.*, vol. 29, no. 1,  
2024. e19828

©The authors;  
reproduction right  
holder Universidad  
Distrital Francisco  
José de Caldas.

#### Open access



\*  **Correspondence:** [ydgarcia1@utpl.edu.ec](mailto:ydgarcia1@utpl.edu.ec)

## Resumen

**Contexto:** El diseño y la operación de carreteras rurales de dos carriles en terrenos montañosos plantean desafíos únicos, que podrían conducir a configuraciones geométricas específicas con un mayor riesgo de accidentes de tránsito. Si bien los modelos predictivos como el Manual de Seguridad Vial (HSM) y las Funciones de Rendimiento de Seguridad (SPF) se utilizan ampliamente a nivel mundial, su aplicación en las regiones montañosas de Ecuador aún no ha sido explorada.

**Método:** Este estudio recopiló variables de diseño y operativas de 25 carreteras en los Andes ecuatorianos para proponer SPFs específicas para carreteras rurales de dos carriles en entornos montañosos. Se utilizaron datos de accidentes de 2017 a 2019 para desarrollar 12 SPFs, que fueron validadas con información de 2020 a 2021. Las SPFs se clasificaron según tres tipos de accidentes (total, fatal + lesión, solo daños materiales) y varios rangos de tráfico diario promedio anual (TPDA).

**Resultados:** El resultado de este estudio incluye el desarrollo de 12 SPFs adaptadas a las regiones montañosas de Ecuador. Estas SPFs estiman la frecuencia esperada promedio de accidentes para condiciones existentes, escenarios alternativos o nuevos proyectos de carreteras propuestos.

**Conclusiones:** Las SPFs propuestas llenan una brecha significativa en la investigación de seguridad vial en Ecuador, ofreciendo una herramienta valiosa para evaluar las probabilidades de accidentes en carreteras rurales de dos carriles en terrenos montañosos. Esta investigación contribuye a mejorar la seguridad vial tanto para las carreteras existentes como para los proyectos futuros, proporcionando información valiosa para la planificación y el diseño del transporte. Oportunidades adicionales de investigación radican en aplicar estas SPFs a regiones adicionales y perfeccionar los modelos según la evolución del tránsito y las condiciones de las carreteras.

**Palabras clave:** funciones de desempeño de seguridad, carreteras rurales de dos carriles, Ecuador

## Table of contents

		3.4. Model validation . . . . .	10
		<b>4. Results and discussion</b>	<b>10</b>
		4.1. Model calibration . . . . .	10
		4.2. Validation of the models . . . . .	11
		<b>5. Conclusions</b>	<b>14</b>
		<b>6. Acknowledgements</b>	<b>15</b>
		<b>7. Author contribution</b>	<b>15</b>
		<b>References</b>	<b>15</b>
<b>1. Introduction</b>	<b>2</b>		
<b>2. Safety performance functions</b>	<b>4</b>		
<b>3. Materials and methods</b>	<b>6</b>		
3.1. Segment selection . . . . .	6		
3.2. Crash data . . . . .	7		
3.3. Calibration of the models . . . . .	9		

## 1. Introduction

The Highway Safety Manual (HSM) provides a predictive method and analytical procedures to support road projects in various phases, including planning, preliminary design, final design, and construction (1). The HSM procedure aids in identifying locations with a potential for reducing

crashes or their severity, diagnosing issues, selecting countermeasures, conducting economic appraisals, prioritizing projects, and evaluating safety effectiveness (2). The HSM primarily describes the predictive method and crash modification factors (CMF). The predictive model includes the safety performance functions (SPFs) used to forecast crash counts at different roadway elements (3). These SPFs should be adjusted to local conditions for optimal results (4). Calibration is essential because the overall crash frequencies can vary significantly from one location to another due to various factors, such as crash reporting thresholds and crash reporting system procedures (1). To adapt the predictive model or SPF to local conditions, there are two options: calibrating the SPF or developing a new one.

The choice between calibration and development depends on the resources available to the institution and its objectives. The FHWA (Federal Highway Administration) issued report FHWA-SA-14-004, which evaluates these two options (5). Calibration maintains the structure of the original equations, allowing to compare the results across different areas. On the other hand, during development, the equations are more likely to change, leading to differences in the comparisons. SPF calibration can be achieved by either calculating the calibration factor or estimating the calibration function.

The calibration factor procedure involves adjusting the original model proposed by the HSM to fit the local conditions. The calibration factor is calculated as the ratio of the total number of observed crashes to the total number of predicted crashes. At times, the model may either overpredict or underpredict the number of accidents. For instance, in Ecuador, the calibration factor for two-lane rural roads was reported to range between 0,12 and 0,25 (6). In this case, the model overpredicted the crash frequency. Here, it is important to note that rural roads are typically susceptible to more severe accidents due to topographical limitations. Similar studies have been conducted in numerous countries and for various types of roads.

Other works have concentrated on the calibration of SPFs, which are models used to predict the number of crashes. In the HSM, SPFs are negative binomial regression models that establish a log-linear relationship between crash frequency and various site characteristics (7). These models invariably include traffic volume (AADT) and can also incorporate site-specific factors such as section length and lane width, among others. It is important to note that the calibration of SPFs should be conducted separately for different crash types (8) rather than combining all crash types into one model. Models specific to crash types tend to provide a better fit in comparison with using a single model that estimates the total crashes together with the overall proportion of each crash type (9).

There is a substantial amount of research worldwide that involves calibrating SPFs for two-lane rural roads. For instance, the original HSM model consistently underpredicts crashes on two-lane rural roads in Utah (10) and Illinois (4). In Pennsylvania, the findings suggest significant variations in safety performance across engineering districts, a factor that should be considered by other state transportation agencies (11). Similar results have been identified in research conducted in Virginia (12), Oregon, and Georgia (13). The performance of SPFs may also differ depending on the type of pavement, as indicated by results obtained in Michigan (14). Additionally, in flat terrain in Spain, the HSM model

exhibits both underprediction and overprediction tendencies in response to variations in AADT (15). Note that it is necessary to adjust SPF models to local conditions in order to achieve more accurate results. These equations are widely used worldwide because they are fundamental for road safety analysis. However, in Ecuador, there has been limited progress on this issue. Hence, the primary objective of this study is to calibrate SPFs for two-lane rural highways in the mountainous regions of Ecuador, considering various types of accidents and different traffic volume ranges. 25 roads in the Andes mountains were selected for evaluation, totaling approximately 630 km in length. Geometric and operational data were collected for each of these roads and compared to recorded road crashes.

To present this calibration, this document is structured as follows. Firstly, it describes the predictive model of the HSM. Secondly, it provides detailed information on the materials and methods employed, including an analysis of the data collection process, calibration procedure, and validation phase. Subsequently, it presents the results obtained from the models and an analysis of prediction errors. Finally, the document highlights the main findings and conclusions.

## 2. Safety performance functions

El HSM (1) states that, for rural two-lane and two-way roadway segments, the predictive model takes the form of Eq. (1).

$$N_{\text{predicted}} = N_{\text{spf-rs}} \times C_r \times CMF_{1r} \times CMF_{2r} \times \dots \times CMF_{12r} \quad (1)$$

Where:

$N_{\text{predicted}}$ : predicted average crash frequency for an individual roadway segment and a specific year (crashes/year)

$N_{\text{spf-rs}}$ : predicted average crash frequency under base conditions for an individual roadway segment (crashes/year)

$C_r$ : calibration factor for roadway segments of a specific type developed for a particular jurisdiction or geographical area (dimensionless)

$CMF_{1r} \dots CMF_{12r}$ : crash modification factors for rural two-lane, two-way roadway segments

Eq. (1) in the model predicts either the total average crash frequency or that of specific crash severity or collision types. This model addresses the regression-to-the-mean bias by focusing on the long-term expected average crash frequency, rather than relying solely on the short-term observed crash frequency (1). To account for variations in segment characteristics when compared to base conditions, Crash Modification Factors (CMFs) are employed with the aim of adjusting the number of crashes. While the HSM provides these CMFs, there is also a website known as the *Crash Modification Factors Clearinghouse* (16), which compiles CMFs from various studies, categorized by country or region. In Eq. (1), the model incorporates the safety performance function, the expression of which can be found in Eq. (2).

$$N_{\text{spf-rs}} = AADT \times L \times 365 \times 10^{-6} \times e^{(-0,312)} \quad (2)$$

Where:

$N_{\text{spf-rs}}$ : predicted average crash frequency for base conditions using a statistical regression model (crashes/year)

$AADT$ : average annual daily traffic (vehicles per day)

$L$ : length of the road segment (miles)

Eq. (2) is based on a negative binomial distribution, which is better suited for modeling the high natural variability of crash data compared to traditional modeling techniques (1). Moreover, this equation involves only two variables, *i.e.*, the average annual daily traffic and the segment length, making it easier to calibrate the model in comparison to other SPFs with more variables. The SPF results can be calculated with a high level of accuracy even when there are only 1-3 years of recorded crashes for the studied site (17). SPFs are developed using statistical multiple regression techniques, employing historical crash data collected over several years at sites with similar characteristics and encompassing a wide range of AADT values (1). These SPFs provide estimates for the average number of crashes when the segments meet the base conditions outlined in Table I. When a segment does not meet the base conditions, it should be adjusted using the CMFs proposed by the HSM model.

**Table I.** Base conditions for roadway segments on rural two-lane, two-way roads

N°	Road feature	Base condition
1	Lane width (LW)	12 ft
2	Shoulder width (SW)	6 ft
3	Shoulder type	Paved
4	Roadside hazard rating (RHR)	3
5	Driveway density (DD)	5 driveways per mile
6	Horizontal curvature	None
7	Vertical curvature	None
8	Centerline rumble strips	None
9	Passing lanes	None
10	Two-way left-turn lanes	None
11	Lighting	None
12	Automated speed enforcement	None
13	Grade level	0 %

**Source:** Highway Safety Manual (1).

The base conditions shown in Table I may not necessarily be directly applicable or valid in the context of Ecuador. The suitability of these factors for calibration in the country would depend on several factors, namely.

- a) *Local conditions:* Ecuador has different road infrastructures, traffic patterns, and environmental factors in comparison with the United States. Therefore, the relevance and impact of these factors on road safety could vary.

- b) *Regulatory and design standards*: Ecuador has its own set of design standards, regulations, and guidelines for road construction and safety. However, its standards are similar to those of the United States.
- c) *Data availability*: The availability and quality of data related to these factors may vary between countries. Ecuador lacks some comprehensive data on certain factors, which affects the calibration process.
- d) *Geographical and environmental differences*: Ecuador's diverse geography, including mountainous regions, coastal areas, and urban centers, may pose unique challenges and considerations not found in the United States. In this context, it is essential to conduct a thorough assessment and potentially adapt the factors used for SPF calibration to align with the specific conditions and requirements of Ecuador.

### 3. Materials and methods

To calibrate SPFs, it is essential to gather data on the AADT, the length of the segment, and the number of crashes recorded in it. This section provides an overview of the materials and methods employed for data collection and processing. Additionally, it outlines the procedures for calibrating and validating the models.

#### 3.1. Segment selection

Initially, 25 two-lane roads were selected, with lengths ranging from 7,4 to 40 miles, as indicated in Table II. The AADT values, calculated or measured in 2017, have been included in this table. It is worth noting that the AADT estimation process was primarily carried out by students participating in the Road Projects course at Universidad Técnica Particular de Loja, along with the OSEVI-UTPL traffic counter (18).

The features of every road listed in Table II were analyzed. These roads have a width between 11 and 12 ft, which is similar to the base condition. Additionally, these roads have a shoulder width between 2 and 4 ft, which is less than the base condition. However, it is important to note that these roads were constructed using older standards, where the shoulder width was narrower. The entire shoulder is paved, in accordance with national guidelines and base conditions. The roadside hazard rating (RHR) ranged between 3 and 7, as these are mountain roads. It is common for Ecuadorian mountain roads to have this level of risk, and it can be challenging to find RHR values equal to 3, which is the base condition. The driveway density was less than 5 driveways per mile, which is also common in mountain roads. Despite these differences, the remaining road features were consistent with the base conditions. Even though it may not be possible to meet all base conditions, efforts were made to align with the majority of them.

**Table II.** Selected two-lane rural roads in this study

N°	Origen-destination of the road	Length (mi)	AADT <sub>2017</sub> (veh per day)
1	Catamayo - San Pedro	7,6	6.153
2	Chambo – Cubijes	12,4	1.001
3	Cuchaentza – Macuma	12,4	298
4	Cuenca - Girón	12,5	14.777
5	Cuenca - Loja	12,5	5.000
6	Cuenca - Molleturo	12,4	4.006
7	Molleturo - El Empalme	12,5	4.916
8	El Descanso - Malima	17,9	398
9	Gualaceo - Limón Indanza	12,6	2.032
10	La Era - Indiucho	12,9	201
11	Las Chinchas - Zambí	12,4	48
12	Loja - Catamayo	19,6	6.153
13	Loja - Jimbilla	12,5	184
14	Loja - Saraguro	40,0	2.803
15	Loja - Yangana	34,7	4315
16	Loja - Zamora	35,9	2.427
17	Malacatos - La Era	12,4	201
18	Puyo - Nuevos Horizontes	14,4	849
19	Riobamba - Penipe	12,4	4.955
20	San Pedro - Las Chinchas	7,4	6.153
21	Sunamanga - Sacapalca	11,7	111
22	Tabacay - Cochahuayco	14,7	990
23	Villonaco - Chuquiribamba	12,4	355
24	Yangana - Sabanilla	12,5	251
25	Ye de Olmedo - Chaguarpamba	12,4	1.407

**Source:** Master's students of the Road Projects course at Universidad Técnica Particular de Loja and the OSEVI-UTPL traffic counter (18)

### 3.2. Crash data

Crash data were sourced from the National Transport Agency of Ecuador's website (19). For each segment listed in Table II, three types of data were collected: total crashes (T), fatal and injury crashes (FI), and property damage only (PDO). It is important to note that these data were not directly available on the website and had to be estimated based on the causes of the accidents. The HSM recommends certain guidelines for data collection. It suggests a minimum sample size of 30-50 sites, with the entire group of calibration sites representing at least 100 crashes per year. It may take one to three years to accumulate a sufficient number of crash events to meet these crash frequency criteria (1).

The road segments were associated with the closest crash record. Subsequently, the database was organized into two time periods: 2017-2019 and 2020-2021. This non-probability sampling division allowed calibrating predictive models via the crash data from the earlier period (2017-2019) and validating them using the more recent data (2020-2021). Initially, an analysis was conducted on individual segments, where 50 sites were randomly selected from those available. Between 2017 and 2019, 1,042 sites had no accidents, while 197 did. In total, 246 crashes were recorded during this period. Due to the low number of records and the high number of sites with no accidents, the random selection did not yield 100 crashes, despite a three-year analysis period. Consequently, we decided to use all 25 road sections as if they were individual segments, as shown in Table III.

**Table III.** Number of crashes in every road for the period of time analyzed (based on ANT data)

N°	2017-2019			2020-2021		
	T	FI	PDO	T	FI	PDO
1	2	1	1	3	2	1
2	8	5	3	2	1	1
3	1	1	0	1	1	0
4	45	18	27	12	7	5
5	21	14	7	3	1	2
6	28	10	18	9	3	6
7	6	3	3	7	5	2
8	0	0	0	0	0	0
9	0	0	0	0	0	0
10	0	0	0	1	1	0
11	0	0	0	0	0	0
12	24	15	9	10	7	3
13	2	2	0	1	0	1
14	22	14	8	20	12	8
15	32	10	22	19	10	9
16	15	4	11	5	3	2
17	0	0	0	1	0	1
18	19	16	3	16	14	2
19	16	9	7	23	8	15
20	3	2	1	4	1	3
21	0	0	0	0	0	0
22	0	0	0	0	0	0
23	1	0	1	2	1	1
24	1	1	0	0	0	0
25	0	0	0	1	1	0
<b>Total</b>	<b>246</b>	<b>125</b>	<b>121</b>	<b>140</b>	<b>78</b>	<b>62</b>

The data from 2019-2021 were then used for model calibration. It is worth noting that, if more than three years of data were available, they could be useful for assessing potential time trends in annual calibration factor estimates (17).



Table III shows that the highest number of observed accidents took place on road No. 4, which also has the highest AADT. Surprisingly, the longest road (14) does not have the highest number of accidents, possibly due to its low AADT value. This pattern is consistent with previously estimated SPFs. Interestingly, several roads had no recorded accidents in the analyzed period, while others had no records in the first period but did in the second. It is worth noting that the total crashes (T) value is approximately double that of fatal and injury crashes (FI) or property damage only (PDO). However, this is coincidental, as this pattern does not hold when analyzing each site separately. These variations and trends suggest that the selected sites may be representative since they encompass various situations encountered in engineering practice.

### 3.3. Calibration of the models

The calibration methodology employed in this study aims to refine the SPFs for two-lane rural highways in mountainous environments in Ecuador. Calibration is a crucial step in developing accurate predictive models for road safety, ensuring that the models align with local conditions and offer enhanced predictive accuracy. The specific methods and approaches for calibrating SPFs can vary, but they generally follow a systematic process. Here are the methods and considerations used in this calibration:

- *Data collection.* The calibration process relied on crash data from the National Transport Agency of Ecuador, covering the period from 2017 to 2019. This dataset included information from 25 distinct road sections, allowing for a comprehensive analysis.
- *Data preprocessing.* Before calibration, the crash data underwent preprocessing, which involved categorizing crashes by severity (fatal, injury, property damage only), cleaning the data to remove duplicates or errors, and geocoding crash locations.
- *Selection of predictive variables.* SPFs are typically developed as regression models that relate crash frequency to various roadway and traffic characteristics. The key variables used in the calibration process include AADT and segment length. In instances where no crashes were recorded, an exponent value of zero was assumed.
- *Cluster analysis.* Subsequently, a cluster analysis was performed to categorize data points based on AADT ranges. This analysis helped to identify groups of data points with similar characteristics, aiding in the calibration process. The clustering approach allowed for a more tailored calibration process based on traffic volume.
- *Model formulation.* A negative binomial or Poisson regression model was selected for formulating the model, whose form determines the relationship between crash frequency and the selected predictive variables.
- *Exponent estimation.* The model was then fitted to the data, including the estimation of model parameters and the exponent for each predictive variable. The exponent values indicate how each variable affects crash frequency. An average of all exponents was calculated for each type of accident and for all accidents combined.
- *Calibration.* This process involved modifying the exponent values to account for factors specific to the study area. It aimed to ensure that the model accurately predicts crash frequency in the local

context. To establish a baseline for calibration, an initial analysis was conducted using data from all the road sections.

### 3.4. Model validation

The calibrated models were put to the test using crash data from 2020-2021. However, due to mobility restrictions resulting from the COVID-19 pandemic, the AADT figures for the sites in Table II needed adjustment. To address this issue, adjustment factors were estimated based on data from the UTPL Road Safety Observatory (18). Specifically, OSEVI-UTPL recorded the number of vehicles circulating on four two-lane roads in mountainous regions in southern Ecuador. The proportion between the traffic volume in 2017 and that in 2020-2021 was calculated for each road, and the adjustment factors were determined as their average. Consequently, the AADT for 2020 was 0,60 when compared to 2017, and for 2021, it was 0,79 compared to 2017. These factors were applied to adjust the AADT values in Table II.

Subsequently, the calibrated models were employed to predict the number of accidents for 2020-2021. These predicted values were compared with the actual recorded values for the same period, as displayed in Table III. Finally, the errors of the calibrated models were analyzed for further refinement. The prediction errors considered for analysis included the Mean Squared Prediction Error (MSPE), Mean Absolute Deviation (MAD), Mean Prediction Bias (MPB), and Mean Absolute Percentage Error (MAPE).

## 4. Results and discussion

Continuing with the procedure outlined in the previous section, the results of the calibration and validation of the SPFs are presented.

### 4.1. Model calibration

Table IV presents the calibration results, beginning with the general model for all traffic, and then the AADT ranges resulting from the cluster analysis, which achieved a 95 % similarity. The histogram in Fig. 1 confirms the ranges obtained in the cluster analysis. However, special attention must be paid to the last range, as there is a lack of AADT values until reaching nearly 15.000 vehicles/day. This stratification of AADT for the calibration of the SPF equations is in line with previous findings (15,20).

Table IV shows that the exponents for total crashes are lower than those for fatal and injury crashes, while the exponents for the latter are very similar to those for property damage only. Additionally, as the number of vehicles increases, the absolute value of these exponents increases, and this trend applies to all three categories of accidents. Only in the range of up to 1.000 vehicles per day do positive exponents appear, whereas, in the other models, the exponents are negative, as seen in the original equation.

Given these observed trends, using a single model, such as Eqs. (3), (4), and (5), would likely result in higher prediction errors when compared to using Eqs. (6) through (18). In light of this, the general model will not undergo validation in the following section.

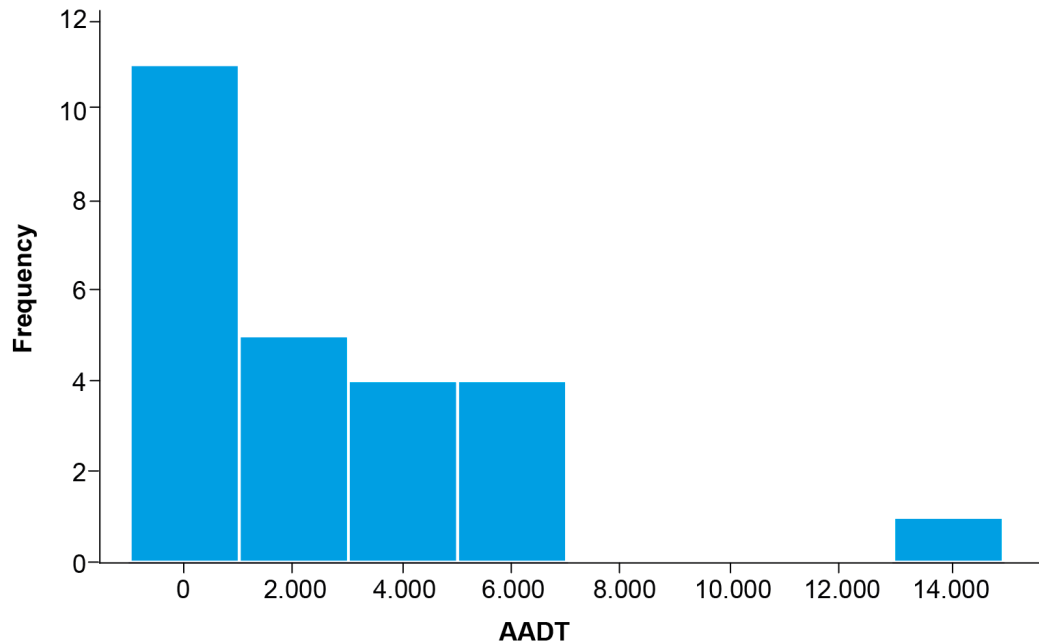


Figure 1. Histogram of AADT

## 4.2. Validation of the models

For validation purposes, we utilized the adjusted AADT, segment length, and crash data from 2020-2021. Eqs. (6)-(18) in Table IV were employed to predict the number of crashes for 2020-2021, as summarized in Table V. The selection of specific equations was based on the corresponding AADT values for each road segment. Table V shows that the total number of observed crashes in the period was 140, while the predicted count was 166,00. For fatal and injury crashes (F+I), there were 78 observed crashes, compared to a predicted count of 106,50. Property damage only (PDO) crashes had 62 observed crashes, with a predicted count of 102,15.

The scatterplot of values from Table V is presented in Fig. 2. In an ideal scenario, all the points would closely align around a 45° reference line. However, it is essential to remember that SPFs provide 'long-term average results, not 'short-term average' ones (17). Although there are points where the equations overestimate or underestimate the observed crashes, it is necessary to conduct an error analysis to determine the validity of the equations.

Table VI presents the prediction errors for the crashes predicted using Eqs. (6)-(18). Regarding the MSPE, lower values are preferable, as they indicate a better fit of the model to the data. In this case, the values could be deemed acceptable, with the highest value being 27,8.

**Table IV.** Safety performance function proposed by this study

AADT	Crash type	SPF equation	Inference		
			interval of crashes	Sample size	Eq. No.
All	T	$N_{spf-rs} = AADT \times L \times 365 \times 10^{-6} \times e^{(-0,244)}$	0-45	17	(3)
	FI	$N_{spf-rs} = AADT \times L \times 365 \times 10^{-6} \times e^{(-0,576)}$	0-18	16	(4)
	PDO	$N_{spf-rs} = AADT \times L \times 365 \times 10^{-6} \times e^{(-0,696)}$	0-27	14	(5)
<1.000	T	$N_{spf-rs} = AADT \times L \times 365 \times 10^{-6} \times e^{(0,128)}$	0-19	5	(6)
	FI	$N_{spf-rs} = AADT \times L \times 365 \times 10^{-6} \times e^{(0,155)}$	0-16	4	(7)
	PDO	$N_{spf-rs} = AADT \times L \times 365 \times 10^{-6} \times e^{(-0,080)}$	0-3	2	(8)
1.000-3.000	T	$N_{spf-rs} = AADT \times L \times 365 \times 10^{-6} \times e^{(-0,161)}$	0-22	3	(10)
	FI	$N_{spf-rs} = AADT \times L \times 365 \times 10^{-6} \times e^{(-0,610)}$	0-14	3	(11)
	PDO	$N_{spf-rs} = AADT \times L \times 365 \times 10^{-6} \times e^{(-0,621)}$	0-11	3	(12)
3.000-6.000	T	$N_{spf-rs} = AADT \times L \times 365 \times 10^{-6} \times e^{(-0,369)}$	6-32	5	(13)
	FI	$N_{spf-rs} = AADT \times L \times 365 \times 10^{-6} \times e^{(-1,142)}$	3-14	5	(14)
	PDO	$N_{spf-rs} = AADT \times L \times 365 \times 10^{-6} \times e^{(-1,056)}$	3-22	5	(15)
6.000-15.000	T	$N_{spf-rs} = AADT \times L \times 365 \times 10^{-6} \times e^{(-1,216)}$	2-45	4	(16)
	FI	$N_{spf-rs} = AADT \times L \times 365 \times 10^{-6} \times e^{(-1,838)}$	1-18	4	(17)
	PDO	$N_{spf-rs} = AADT \times L \times 365 \times 10^{-6} \times e^{(-2,037)}$	1-27	4	(18)

T: total crashes; FI: fatal and injury crashes; PDO: property damage only;  $N_{spf-rs}$ : predicted average crash frequency for base conditions using a statistical regression model (crashes/year); AADT: average annual daily traffic (vehicles per day); L: length of the road segment (miles).

The MAD provides a measure of the average magnitude of prediction variability, and smaller values are preferred over larger ones. In this case, the maximum value was 3,6, which was deemed acceptable.

The MPB offers insights into whether the equations overpredict or underpredict. A positive value suggests underprediction, while a negative one implies overprediction. As observed in Fig. 2, the equations are slightly underpredicting, consistent with the calculated positive values of MPB.

Lastly, the MAPE calculates the average error percentage between the observed and predicted values, relative to the former. Lower MAPE values indicate better predictions.

However, in this case, the values are relatively high due to their close relationship with the total recorded crash values.

Despite the higher MAPE values, the rest of the error metrics constitute noteworthy results, suggesting that the models can be regarded as validated.

**Table V.** Observed and expected crashes calculated using the equations 6-18 from Table IV

N°	AADT	Length (mi)	Total crashes		Fatal + injured		PDO crashes	
			Observed	Expected	Observed	Expected	Observed	Expected
1	3.286	7,58	3	6,29	2	2,90	1	3,16
2	535	12,43	2	2,76	1	2,83	1	2,24
3	159	12,43	1	0,82	1	0,84	0	0,67
4	7.891	12,49	12	10,66	7	5,73	5	4,69
5	2.670	12,49	3	10,37	1	6,62	2	6,54
6	2139	12,43	9	8,26	3	5,28	6	5,21
7	2.625	12,49	7	10,19	5	6,51	2	6,43
8	1.497	17,90	0	8,33	0	5,32	0	5,25
9	1.085	12,62	0	4,25	0	2,72	0	2,68
10	107	12,93	1	0,58	1	0,59	0	0,47
11	26	12,43	0	0,13	0	0,14	0	0,11
12	3.286	19,64	10	16,29	7	7,52	3	8,20
13	98	12,49	1	0,51	0	0,52	1	0,41
14	1.497	39,96	20	18,59	12	11,87	8	11,73
15	2.304	34,68	19	24,84	10	15,86	9	15,67
16	1.296	35,86	5	14,45	3	9,22	2	9,11
17	107	12,43	1	0,55	0	0,57	1	0,45
18	453	14,42	16	2,71	14	2,79	2	2,20
19	2.646	12,43	23	10,22	8	6,53	15	6,45
20	3.286	7,40	4	6,14	1	2,83	3	3,09
21	59	11,75	0	0,29	0	0,30	0	0,23
22	529	14,73	0	3,23	0	3,32	0	2,63
23	190	12,43	2	0,98	1	1,00	1	0,79
24	134	12,49	0	0,69	0	0,71	0	0,56
25	751	12,43	1	3,87	1	3,98	0	3,15
<b>TOTAL</b>			140	166,0	78	106,5	62	102,15

**Table VI.** Prediction errors of the proposed safety performance function

Error	Total crashes	Fatal plus injured crashes	Property damage only crashes
MSPE	27,8	12,3	12,4
MAD	3,6	2,3	2,5
MPB	1,0	1,1	1,6
MAPE	75,4	107,4	103,9

The presented and validated models represent significant progress in the field of road safety for two-lane roads. Using separate equations for different types of accidents, as demonstrated here, addresses the limitation of a single equation, such as the one proposed by the HSM, which can lead to errors when applied without distinction among accident types. This finding is consistent with previous

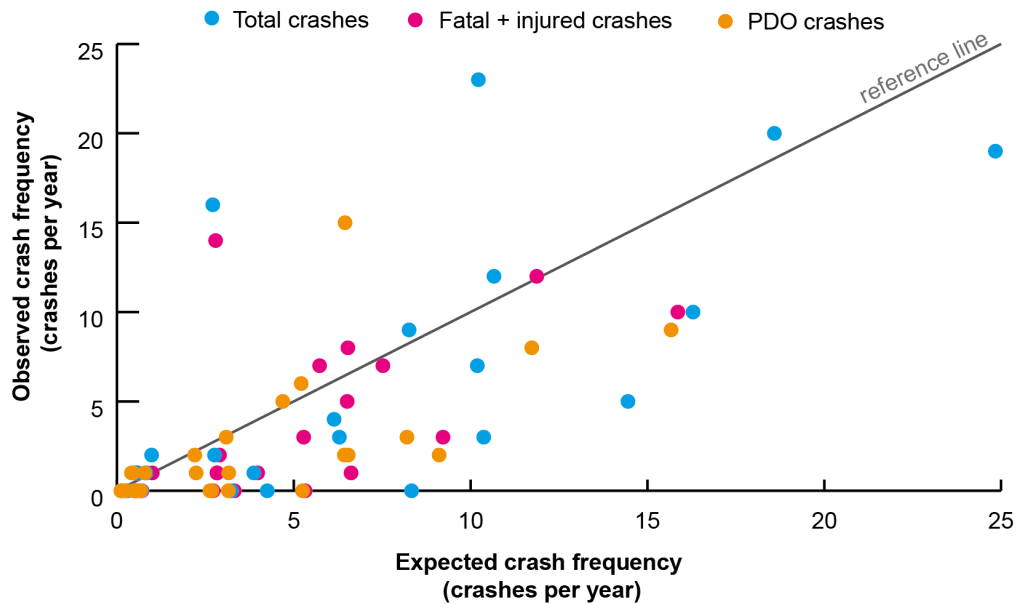


Figure 2. Expected versus observed crash frequency 2020-2021

research (9). Furthermore, the utilization of models based on traffic ranges, as shown in this study, has also been recognized in previous studies, and it is confirmed to provide improved results (17). These advancements contribute to a more nuanced and accurate understanding of road safety, ultimately aiding in the development of more effective safety measures and policies for two-lane roads.

## 5. Conclusions

The objective of this study was to propose Safety Performance Functions (SPFs) for two-lane rural highways in mountainous environments in Ecuador. After analyzing 25 road sections and accident data from 2017 to 2021, the following conclusions can be drawn: It was possible to successfully calibrate and validate 12 SPFs for two-lane roads. Unlike the Highway Safety Manual (HSM), which provides a single model for all accident types and Average Annual Daily Traffic (AADT) ranges, this study offers four models for total crashes, four for fatal and injury accidents, and four for property damage only. These models cover various AADT ranges, thus enhancing their applicability.

The base conditions, as defined in the HSM, are primarily derived from road characteristics commonly found in the United States. Our study area in Ecuador includes roads that may have different characteristics, such as narrower shoulder widths, variations in roadside hazard ratings, and mountainous terrain, which are not fully aligned with the HSM's base conditions. To address this limitation, we conducted our calibration and validation efforts using the available data, which reflect the local conditions of Ecuadorian mountain roads. While our approach provided valuable insights into road safety in our specific context, we recognize that it may have introduced variations compared to a strict adherence to HSM base conditions.

This study underscores the importance of calibrating models developed elsewhere before applying them to local conditions. The calibrated equations can be used for existing roads, alternative designs for existing ones, or new road projects, ultimately contributing to improved road safety for two-lane rural roads in Ecuador.

However, it is important to acknowledge the study's limitations. Firstly, it focused exclusively on two-lane roads in mountainous environments, which may not fully represent all road types in the country. Additionally, there was limited representation of high-traffic sites, which could lead to inconsistencies in the models for the highest AADT range. Furthermore, the study could not verify whether all road accidents were accurately collected and categorized, relying solely on data provided by the National Transport Agency (ANT).

Despite these limitations, the study significantly contributes by introducing various SPF equations for three types of road accidents and several traffic volume ranges that were previously lacking in the country. These models serve as a valuable starting point for analyzing accident rates in Ecuador and other regions with similar road characteristics.

## 6. Acknowledgements

Special thanks to the students of the 'Road Projects' course in the Master's Degree program in Civil Engineering with a focus on mountain roads at Universidad Técnica Particular de Loja for their invaluable support in collecting and calculating design and operational variables for the 25 roads included in this study regarding the period from April to August 2022. Additionally, special appreciation goes to ChatGPT 3.5, an advanced language model developed by OpenAI, for its linguistic capabilities in crafting a clear and accurate English version.

## 7. Author contribution

The author contributed in the following aspects: conceptualizing the study, designing the research methodology, data collection and analysis, writing and drafting the manuscript, and reviewing and editing the manuscript.

## References

- [1] AASHTO, *Highway Safety Manual*, First. Washington, EE. UU.: AASHTO, 2010. ↑[2](#), [3](#), [4](#), [5](#), [7](#)
- [2] AASHTO, "Highway Safety Manual," 2016. <https://www.highwaysafetymanual.org/Pages/default.aspx> (accessed Jul. 26, 2022). ↑[3](#)
- [3] M. M. A. Al-Omari, M. Abdel-Aty, and Q. Cai, "Crash analysis and development of safety performance functions for Florida roads in the framework of the context classification system," *J. Safety Res.*, vol. 79, pp. 1-13, Dec. 2021. <https://doi.org/10.1016/J.JSR.2021.08.004> ↑[3](#)

- [4] M. Williamson and H. Zhou, "Develop calibration factors for crash prediction models for rural two-lane roadways in Illinois," *Procedia Soc. Behav. Sci.*, vol. 43, pp. 330-338, Jan. 2012. <https://doi.org/10.1016/J.SBSPRO.2012.04.106> ↑3
- [5] R. Srinivasan, D. Carter, and K. Bauer, "Safety performance function decision guide: SPF calibration vs SPF development (FHWA-SA-14-004)," 2013. <https://rosap.nhtl.bts.gov/view/dot/49504> (accessed Nov. 11, 2022). ↑3
- [6] Y. García, P. Rojas, E. Duque, and H. Rojas-Asuero, "Calibración del modelo predictivo de accidentes de tránsito del HSM en carreteras del Cantón Loja (Ecuador)," *INNOVA Res. J.*, vol. 3, no. 7, pp. 114-123, Jul. 2018. <https://doi.org/10.33890/innova.v3.n7.2018.605> ↑3, 12
- [7] R. Srinivasan and K. Bauer, "Safety performance function development guide: Developing jurisdiction-specific SPFs (FHWA-SA-14-005)," 2013. <https://highways.dot.gov/safety/data-analysis-tools/rsdp/rsdp-tools/safety-performance-function-development-guide-0> (accessed Nov. 11, 2022). ↑3
- [8] K. Bauer and D. Harwood, "Safety Effects of Horizontal Curve and Grade Combinations on Rural Two-Lane Highways (FHWA-HRT-13-077)," 2014. <https://www.fhwa.dot.gov/publications/research/safety/13078/index.cfm> (accessed Nov. 11, 2022). ↑3
- [9] T. Jonsson, C. Lyon, J. N. Ivan, S. P. Washington, I. Van Schalkwyk, and D. Lord, "Differences in the performance of safety performance functions estimated for total crash count and for crash count by crash type," *Transportation Res. Rec.*, vol. 2102, pp. 115-123, 2009. <https://doi.org/10.3141/2102-15> ↑3, 14
- [10] B. K. Brimley, "Calibration of the highway safety manual safety performance function and development of jurisdiction-specific models for rural two-lane two-way roads in Utah," Master's thesis, Fulton College of Engineering and Technology, 2011. [Online]. Available: <http://hdl.lib.byu.edu/1877/etd4337> ↑3
- [11] L. Li, V. V. Gayah, and E. T. Donnell, "Development of regionalized SPFs for two-lane rural roads in Pennsylvania," *Accid. Anal. Prev.*, vol. 108, pp. 343-353, Nov. 2017. <https://doi.org/10.1016/J.AAP.2017.08.035> ↑3
- [12] N. J. Garber, P. R. Haas, and C. Gosse, "Safety performance functions for two-lane roads in Virginia," presented at the Transportation Res. B. 89th Annual Meeting, Washington DC, USA, 2010. [Online]. Available: <https://trid.trb.org/view/910153> ↑3
- [13] P. Alluri, J. Ogle, F. Hie, K. Gladhill, K. K. Dixon, and C. M. Monsere, "Comparison of calibration factors obtained using Oregon and Georgia data to implement HSM procedures on two-way two-lane rural roads," presented at Moving Toward Zero. 2011 ITE Tech. Conf. Exhibit, 2011. [Online]. Available: <https://trid.trb.org/view/1103800> ↑3
- [14] S. Y. Stapleton, A. J. Ingle, M. Chakraborty, T. J. Gates, and P. T. Savolainen, "Safety performance functions for rural two-lane county road segments," *Transportation Res. Rec.*, vol. 2672, no. 52, pp. 226-237, Oct. 2018. <https://doi.org/10.1177/0361198118799035> ↑3, 9
- [15] L. Garach, J. de Oña, G. López, and L. Baena, "Development of safety performance functions for Spanish two-lane rural highways on flat terrain," *Accid. Anal. Prev.*, vol. 95, pp. 250-265, Oct. 2016. <https://doi.org/10.1016/J.AAP.2016.07.021> ↑4, 10



- [16] FHWA, “Crash modification factors clearinghouse,” 2022. <http://www.cmfclearinghouse.org/index.cfm> (accessed Jul. 27, 2022). ↑4
- [17] G. Bahar, NAVIGATS Inc., and E. Hauer, “User’s guide to develop highway safety manual safety performance function calibration (Project 20-07/332),” 2014. [https://onlinepubs.trb.org/onlinepubs/nchrp/docs/NCHRP20-07\(332\)\\_FinalGuide.pdf](https://onlinepubs.trb.org/onlinepubs/nchrp/docs/NCHRP20-07(332)_FinalGuide.pdf) (accessed Nov. 11, 2022). ↑5, 8, 11, 14
- [18] OSEVI-UTPL, “Observatorio de Seguridad Vial,” 2022. <https://vinculacion.utpl.edu.ec/es/observatorios/osevi> (accessed Aug. 03, 2022). ↑6, 7, 10, 11
- [19] Agencia Nacional de Tránsito del Ecuador, “Estadísticas siniestros de tránsito,” 2022. <https://www.ant.gob.ec/estadisticas-siniestros-de-transito-prueba/> (accessed Jul. 27, 2022). ↑7
- [20] J. M. Pardillo Mayora, R. B. Manzo, and A. C. Orive, “Refinement of accident prediction models for Spanish national network,” *Transportation Res. Rec.*, vol. 1950, pp. 65-72, Jan. 2006. <https://doi.org/10.1177/0361198106195000108> ↑10

## Yasmany García-Ramírez

Civil Engineer graduated from Universidad Técnica Particular de Loja (UTPL) in Ecuador in 2006. He obtained a Specialist’s degree in Mountain Road Engineering from Universidad Nacional de San Juan (UNSJ) in Argentina in 2009, as well as a PhD in Civil Engineering in 2014. Currently, García-Ramírez works as an associate professor at UTPL, where he imparts knowledge in subjects related to road design at both undergraduate and postgraduate levels. He also holds several leadership roles within UTPL, including the directorship of the Master’s degree program in Civil Engineering with an emphasis on mountain roads. García-Ramírez has more than 40 publications in the field of road and civil engineering education.

**Email:** [ydgarcia1@utpl.edu.ec](mailto:ydgarcia1@utpl.edu.ec)

